



NTPC

Nam Theun 2 Power Company Ltd.

Nam Theun 2 Hydroelectric Project

Resettlement Action Plan 5

Transmission Lines LPA: 52, 53, 54, 55

October 2007

A	12 Oct 2007	M. Ovenden	O. Salignat	B. Tribollet	Final issue
Rev	Date	Author	Checked	Approved	Modification Details
Accessibility					
<input type="checkbox"/> Public					
Document No.					
<input type="checkbox"/> Internal					
[N T P C S K 0 4 0 3 0 4 0 0 0 0 0 6 A]					
<input checked="" type="checkbox"/> Confidential					
This document is NTPC property and shall not be used, reproduced, transmitted and/or disclosed without prior permission.					

Table of Contents

	Page
1 Introduction.....	3
1.1 Resettlement Action Plan 5	3
1.1.1 Land Parcel Areas.....	3
1.2 Efforts to minimize resettlement/displacements	3
2 Compensation Policy and Scheme.....	5
2.1 Compensation Policy and Scheme.....	5
2.1.1 Permanent Loss.....	7
2.1.2 Temporary Impact.....	10
2.1.3 Corridor Impact.....	12
3 Project affected Household	14
3.1 Baseline	14
3.2 Consultation process.....	14
3.3 Project Affected Households	19
3.4 Impact and Mitigation measures.....	20

List of Tables

Table 1. PAH list per LPA	19
Table 2. Type of disturbance, the impact and social mitigation measures.....	20

List of Figures

Figure 1. Map of the Transmission Line.....	4
Figure 2. Definition of Area for compensation.....	6
Figure 3. Compensation Flowchart.....	7
Figure 4. Compensation consultation diagram	14
Figure 5. Compensation consultation discussion	15
Figure 6. Flowchart of the Consultation Process (1)	16
Figure 7. Flowchart of the Consultation Process (2)	19

List of Annexes

Annex 1. Inventory of Loss for RAP 5	21
---	-----------

1 Introduction

1.1 Resettlement Action Plan 5

The Social and Environmental aspects of the Transmission Line falls within the responsibility of the Project Lands office of NTPC. All activities regarding the relocation and compensation of PAHs within the impacted area of the Transmission Line are compiled under Resettlement Action Plan (RAP) 5.

1.1.1 Land Parcel Areas

The transmission line covers an area of 139 km from Gnommalath, where the power station is found, to the Mekong River at Kaysone, where the electricity is transported over to Thailand for redistribution and sale. The 115 kV line runs 30 km whereas the 500 kV line runs the entire length of 139 km.

As seen in Figure 1, the entire transmission line crosses over two provinces, Khammouane and Savanakhet, through five districts namely Gnommalath, Mahaxai, Xe Bang Fai, Xaibouli and Kaysone. Overall 53 villages are affected by the transmission line and its associated construction activities

1.2 Efforts to minimize resettlement/displacements

Efforts have been made to minimize the impact of Nam Theun 2 Project requirements. Modifications in design and land requirements have occurred since the design phase and an additional survey was conducted once the final details regarding buffer zone/ corridor size was determined. PAHs were consulted and informed about the impacts and the compensation that they would receive.

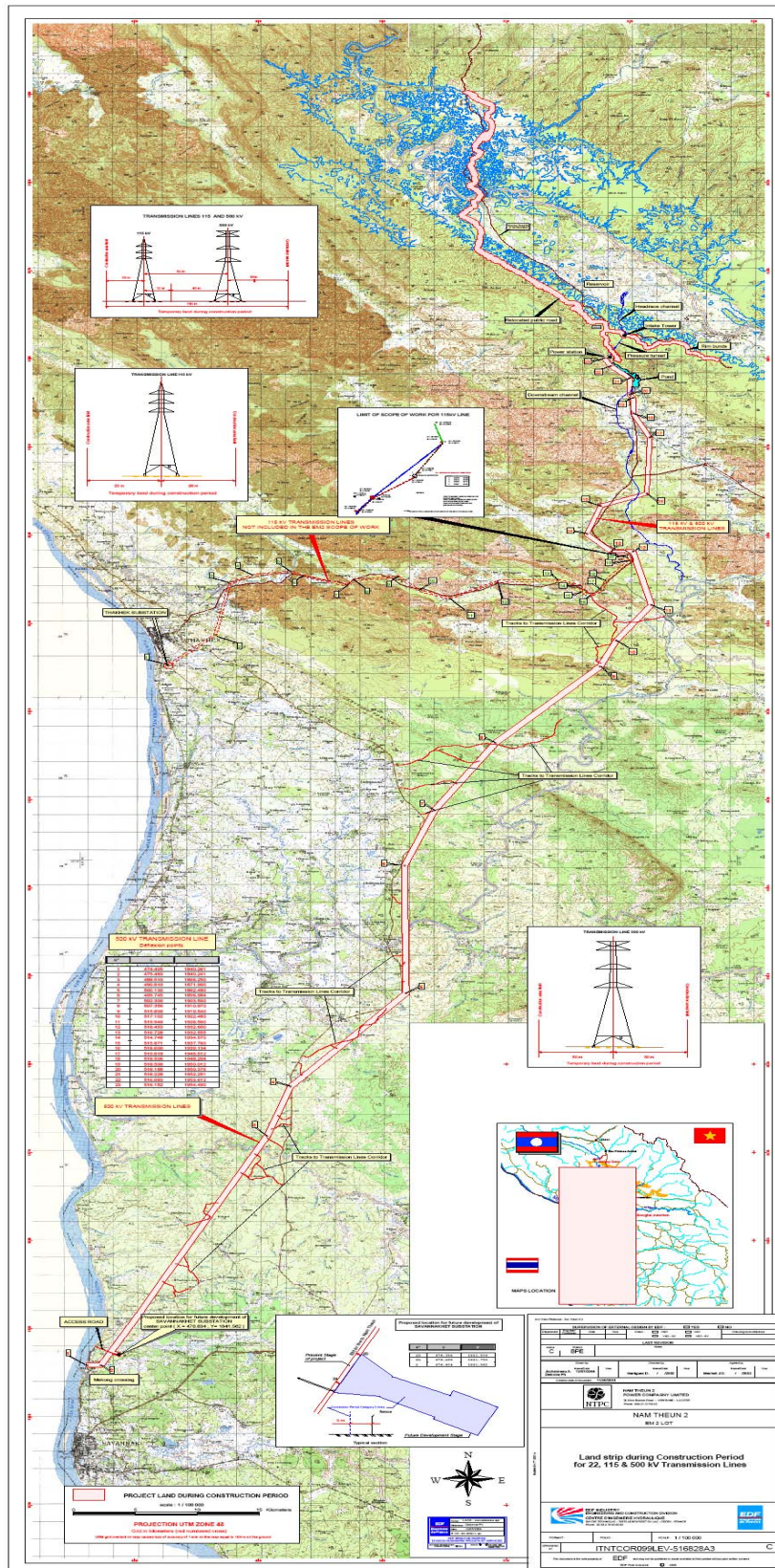


Figure 1. Map of the Transmission Line

2 Compensation Policy and Scheme

2.1 Compensation Policy and Scheme

The compensation policy and scheme of RAP 5 generally follows the overall scheme found in RAP Volume 1 and is similar to that of RAP 3 but there are differences in land utilization. Crop productivity values are based on rates from each district and therefore compensation rates and final values differ between districts. Compensation is based on how the land is utilized and to what degree it is utilized, as seen in figure 2.

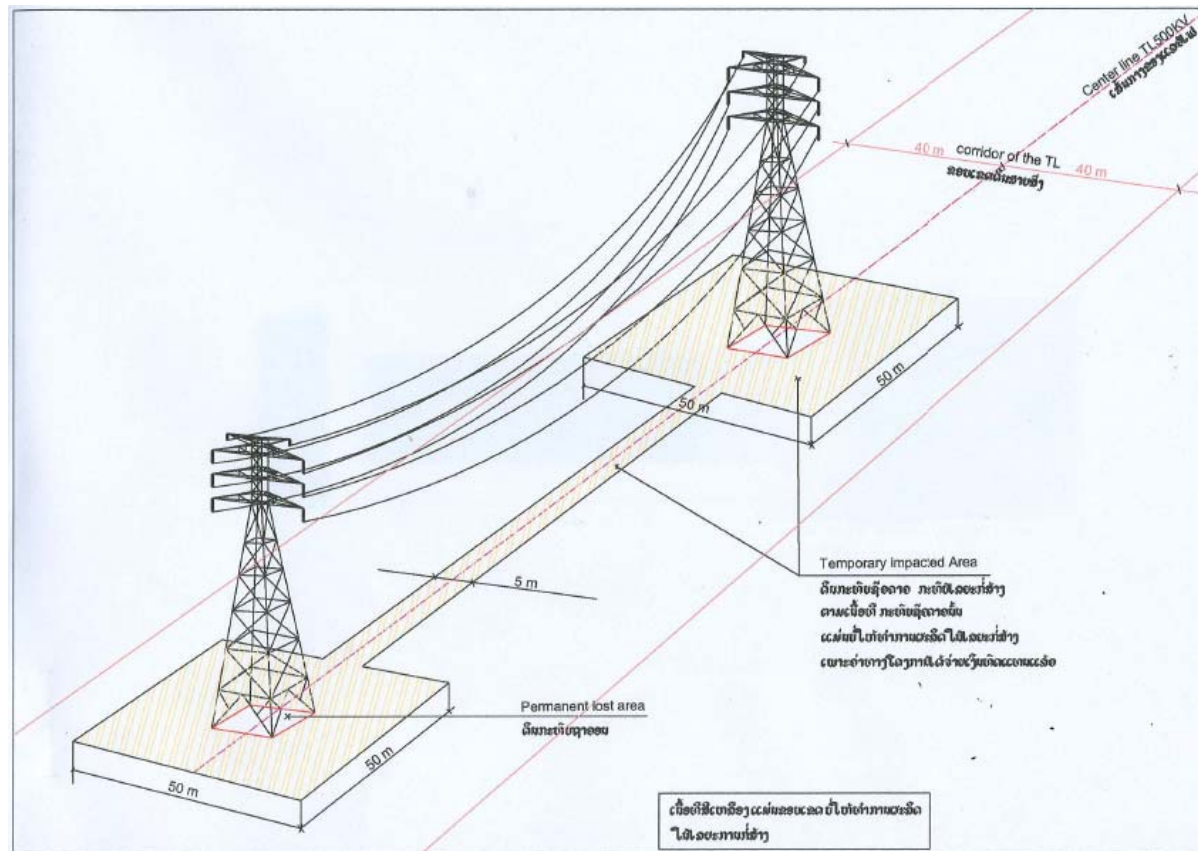


Figure 2. Definition of Area for compensation

RAP 5 can be visualized as depicted in the following flowchart:

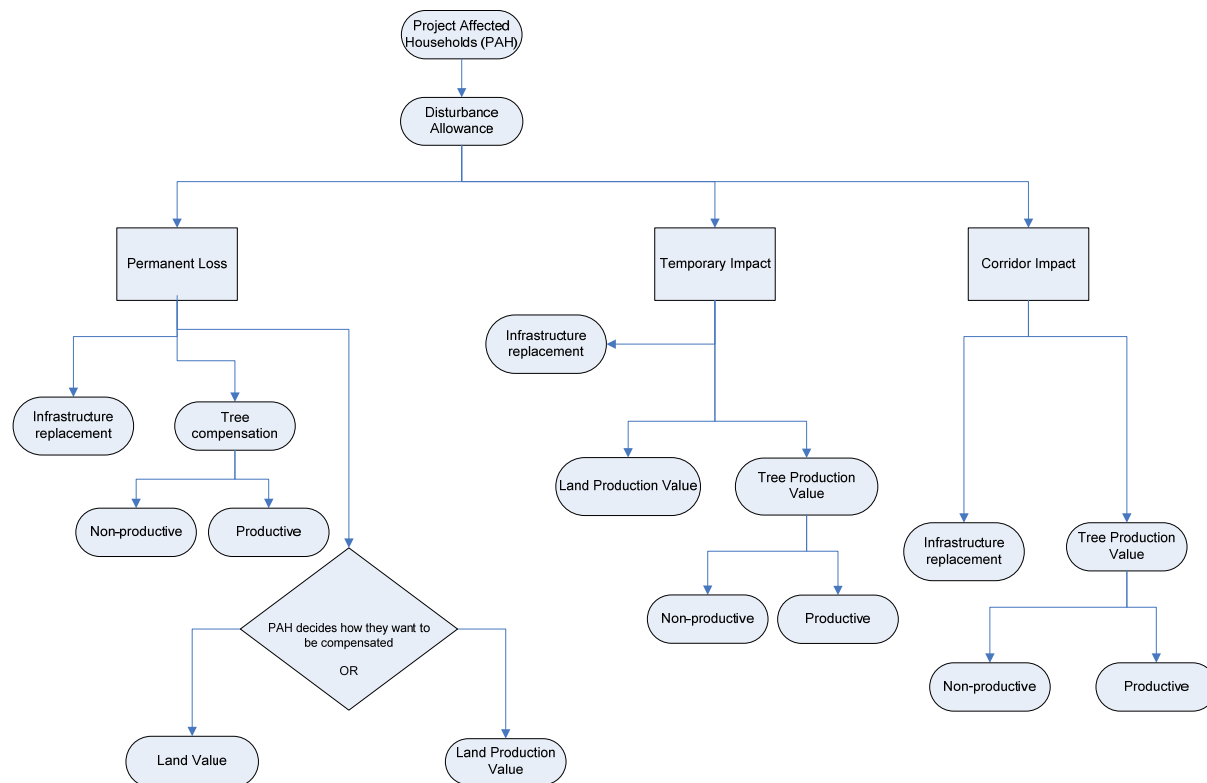


Figure 3. Compensation Flowchart

2.1.1 Permanent Loss

Permanent loss classifies the land where the foot of the transmission tower is built. Within this classification there are 3 categories for which compensation is provided:

1. Infrastructure Replacement

As per the CA, impacted infrastructure is replaced by NTPC. The following steps are taken to replace infrastructure:

- a. Dismantling of structure
- b. Transportation of structure material from present location to new defined location
- c. Bush clearing and leveling of land
- d. Temporary house provision for PAH during construction

- e. New material (consistent with old structure material) is provided
- f. Tools for construction is provided to the PAH
- g. Labour and other related costs are provided to the PAH
- h. Disturbance allowance at \$15 USD per person (including the initial disturbance allowance) and 300,000 kip transitional assistance per household is provided for the PAH.

NTPC restores infrastructure to at least pre-project level. For example, if a house is electrified, NTPC will provide power points and electricity lines to the relocated house. NTPC also restores all other peripheral infrastructure such as wells, animal pens, storage and shops.

2. Tree Productivity Compensation

As per the CA, PAHs are to be compensated for trees that are impacted by the project and the lost potential production of the tree.

Cash compensation is provided for trees such as fruit trees and timber trees.

a. Productive trees:

Tree productivity is calculated using six factors:

- Number and type of trees as identified during the initial baseline survey.
- Productivity of the type of tree as calculated by the DWG. This value is expressed as kilograms derived from the number of trees and the type of fruit it bears per year. As previously explained, each district could have a different value for productivity. In the case of trees, 2, 5 or 7 years productivity is used depending on the type of tree as growth and harvest cycles of trees are different and productivity can be restored to pre-project levels within 2, 5 or 7 years.
- The market price as calculated at the prevailing market rate.
- The cost of seeds, as derived from the number of trees cut.
- The cost of maintenance up to 7 years. Calculation depends on the type of tree, for example, bamboo , maintenance costs are paid 5 years, banana palm for 2 years and mango trees for 7 years.
- The cost of clearing bush around the tree (as calculated per square meter between 6 and 10 m² per tree).

The following formula is then utilized to determine cash compensation for tree production:

Tree Production Value= [Productivity (kg/yr) X market price (kip/kg) X 2, 5 or 7 years] + [seed cost X # of trees] + [maintenance cost X # of trees X 2, 5 or 7 years] + [bush clearing cost X designated area around tree (m²)]

b. Non-productive trees:

Compensation for non-productive trees is calculated using the following factors:

- The cost of seeds, as equal to the number of trees cut is calculated. This is determined by the DWG.
- The cost of maintenance as determined by the DWG.
- Bush clearing cost as estimated by NTPC and DWG.
- The age of the trees to be cut (as recorded in the baseline survey).

Non-productive Tree Value= [seed cost (kip/seed) X # of trees] + [maintenance cost (kip) X# of trees X age of tree (years)] + [bush clearing cost (kip) X area designated around tree (m²)]

3. Land Value or Production Value

PAHs have the option of obtaining cash compensation for either the value of the land or the production value of the land. The formula to determine the cash value is as follows:

Land Value= Area (m²) X price of land (kip/ m²)

The price of the land is estimated and provided by the Prime Minister's Office.

OR

The productivity of the land is calculated by the District Working Group (DWG). This value is expressed as kilograms per year. Each district could assign a different value to productivity depending on the rate of productivity within the given district.

The price of the produce is also calculated at the prevailing market rate.

With these factors in place, the following formula is utilized to determine cash compensation for land production:

Production Value= Area (m²) X Productivity (kg/m²) X price of produce (kip/kg) X 7 years

Cash compensation is based on the above calculation.

2.1.2 Temporary Impact

Temporary impacts are to be expected from the construction of access roads and building areas. These parcels of lands are not purchased by the project and are merely used during construction. There are three areas that experience temporary impacts. The first area is the piece of land immediately around the tower footing. The second is the path between the towers, and thirdly, the access roads to the towers to be constructed.

Compensation for temporarily impacted lands is as follows:

1. Infrastructure replacement

As described in 2.1.1, infrastructure replacement is consistent across all levels of impact in RAP 5.

2. Land Production Value Formula

Land production, for example, for paddy rice is calculated using the following factors:

- The total area affected is calculated by subtracting the area of permanently affected land from the area of remaining land surrounding the tower. Other affected land, such as that of the path to the next tower or access roads is also assessed.
- The productivity of the land is calculated by the District Working Group (DWG). This value is expressed as kilograms per year. Each district could assign a different value to productivity depending on the rate of productivity within the given district. Only two years is calculated into the equation which is the disturbance period of construction. Productivity is not calculated with regards to the growth and harvest cycle as rice is only affected temporarily and can be restored to pre-project levels immediately.
- The price of the produce is also calculated at the prevailing market rate.

With these factors in place, the following formula is utilized to determine cash compensation for land production:

Land Production Value = Area (m²) X productivity (kg/m²) X 2 years X price of produce (kip/kg)

3. Tree Productivity Compensation

As described above in 2.1.1, tree productivity calculations are consistent with compensation provided across all level of impacts in RAP 5.

As per the CA, PAHs are to be compensated for trees that are impacted by the project and the lost potential production of the tree. Cash compensation is provided for trees such as fruit trees and timber trees.

- a. Productive trees:

Tree productivity is calculated using six factors:

- Number and type of trees as identified during the initial baseline survey.

- Productivity of the type of tree as calculated by the DWG. This value is expressed as kilograms derived from the number of trees and the type of fruit it bears per year. As previously explained, each district could have a different value for productivity. In the case of trees, 2, 5 or 7 years productivity is used depending on the type of tree as growth and harvest cycles of trees are different and productivity can be restored to pre-project levels within 2, 5 or 7 years.
- The market price as calculated at the prevailing market rate.
- The cost of seeds, as derived from the number of trees cut.
- The cost of maintenance up to 7 years. Calculation depends on the type of tree, for example, bamboo, maintenance costs are paid 5 years, banana palm for 2 years and mango trees for 7 years.
- The cost of clearing bush around the tree (as calculated per square meter between 6 and 10 m² per tree).

The following formula is then utilized to determine cash compensation for tree production:

Tree Production Value= [Productivity (kg/yr) X market price (kip/kg) X 2, 5 or 7 years] + [seed cost X # of trees] + [maintenance cost X # of trees X 2, 5 or 7 years] + [bush clearing cost X designated area around tree (m²)]

b. Non-productive trees:

Compensation for non-productive trees is calculated using the following factors:

- The cost of seeds, as equal to the number of trees cut is calculated. This is determined by the DWG.
- The cost of maintenance as determined by the DWG.
- Bush clearing cost as estimated by NTPC and DWG.
- The age of the trees to be cut (as recorded in the baseline survey).

Non-productive Tree Value= [seed cost (kip/seed) X # of trees] + [maintenance cost (kip) X # of trees X age of tree (years)] + [bush clearing cost (kip) X area designated around tree (m²)]

2.1.3 Corridor Impact

The corridor is the 40 meter buffer area on either side of the central line as depicted in Figure 2. This area is cleared of tall trees that would interfere with the transmission line. Infrastructure is also cleared within a 30 meter buffer zone from the central line on either side and PAHs are provided with replacement infrastructure elsewhere. All peripheral infrastructure that the PAH owns will also be replaced to pre-project levels at the new house location.

Methods of compensation for the corridor are as follows:

1. Infrastructure Replacement

Infrastructure replacement is consistent across all levels of impact in RAP 5.

2. Tree Productivity Compensation

Tree productivity calculation is consistent with compensation provided across all level of impacts in RAP 5.

As per the CA, PAHs are to be compensated for trees that are impacted by the project and the lost potential production of the tree.

Cash compensation is provided for trees such as fruit trees and timber trees.

- c. Productive trees:

Tree productivity is calculated using six factors:

- Number and type of trees as identified during the initial baseline survey.
- Productivity of the type of tree as calculated by the DWG. This value is expressed as kilograms derived from the number of trees and the type of fruit it bears per year. As previously explained, each district could have a different value for productivity. In the case of trees, 2, 5 or 7 years productivity is used depending on the type of tree as growth and harvest cycles of trees are different and productivity can be restored to pre-project levels within 2, 5 or 7 years.
- The market price as calculated at the prevailing market rate.
- The cost of seeds, as derived from the number of trees cut.
- The cost of maintenance up to 7 years. Calculation depends on the type of tree, for example, bamboo , maintenance costs are paid 5 years, banana palm for 2 years and mango trees for 7 years.
- The cost of clearing bush around the tree (as calculated per square meter between 6 and 10 m² per tree).

The following formula is then utilized to determine cash compensation for tree production:

Tree Production Value= [Productivity (kg/yr) X market price (kip/kg) X 2, 5 or 7 years] + [seed cost X # of trees] + [maintenance cost X # of trees X 2, 5 or 7 years] + [bush clearing cost X designated area around tree (m²)]

d. Non-productive trees:

Compensation for non-productive trees is calculated using the following factors:

- The cost of seeds, as equal to the number of trees cut is calculated. This is determined by the DWG.
- The cost of maintenance as determined by the DWG.
- Bush clearing cost as estimated by NTPC and DWG.
- The age of the trees to be cut (as recorded in the baseline survey).

Non-productive Tree Value= [seed cost (kip/seed) X # of trees] + [maintenance cost (kip) X# of trees X age of tree (years)] + [bush clearing cost (kip) X area designated around tree (m²)]

3 Project affected Household

3.1 Baseline

Baseline information was gathered to assess the extent of the impact and identify potential PAHs within the Transmission Line affected area. These data are derived from measurements of whole plots and estimates of impacted areas. Detailed design and tower locations were identified and provided to NTPC in June 2006. NTPC conducted a second assessment to identify actual impacts from the construction of the transmission line and PAHs.

3.2 Consultation process

Following the baseline data gathering activity consultations were held with the PAHs. This activity was led by the District Working Group and the Village Chief. The DWG and the Village Chief, together with the PAH have verified the list of expected impact.

Presentations were conducted within the villages to fully explain the complicated compensation scheme for RAP 5.



Figure 4. Compensation consultation diagram



Figure 5. Compensation consultation discussion

The consultation process is conducted systematically, as depicted in the flowchart below:

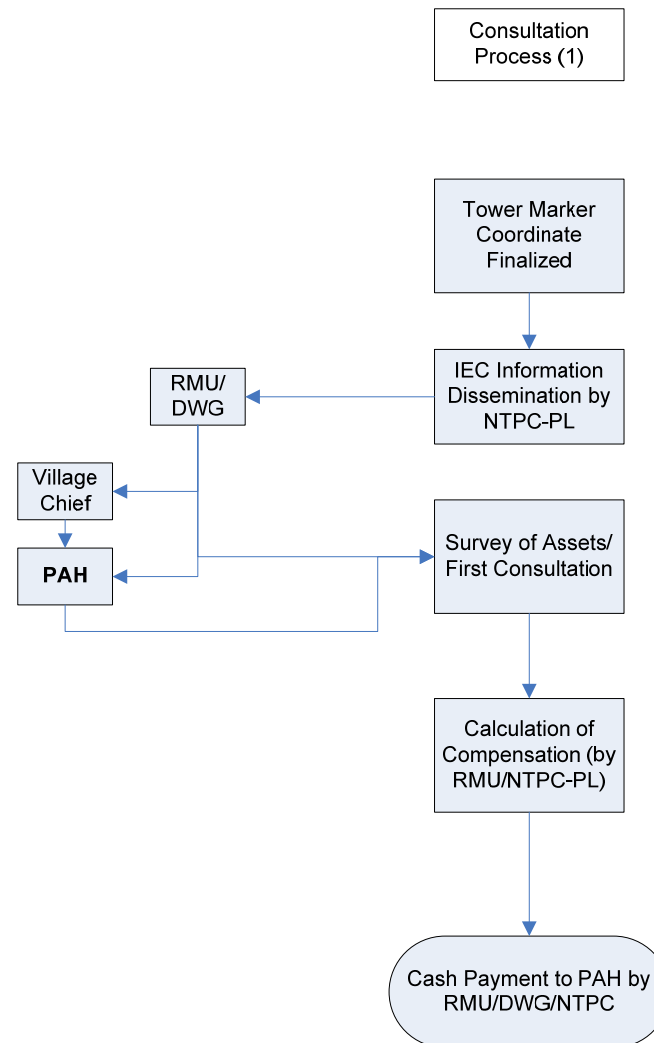


Figure 6. Flowchart of the Consultation Process (1)

The first step in consultation involves informing the PAHs of the impact and verifying data with the PAHs in collaboration with the DWG, RMU and the Village Chief to ensure the accuracy of data.

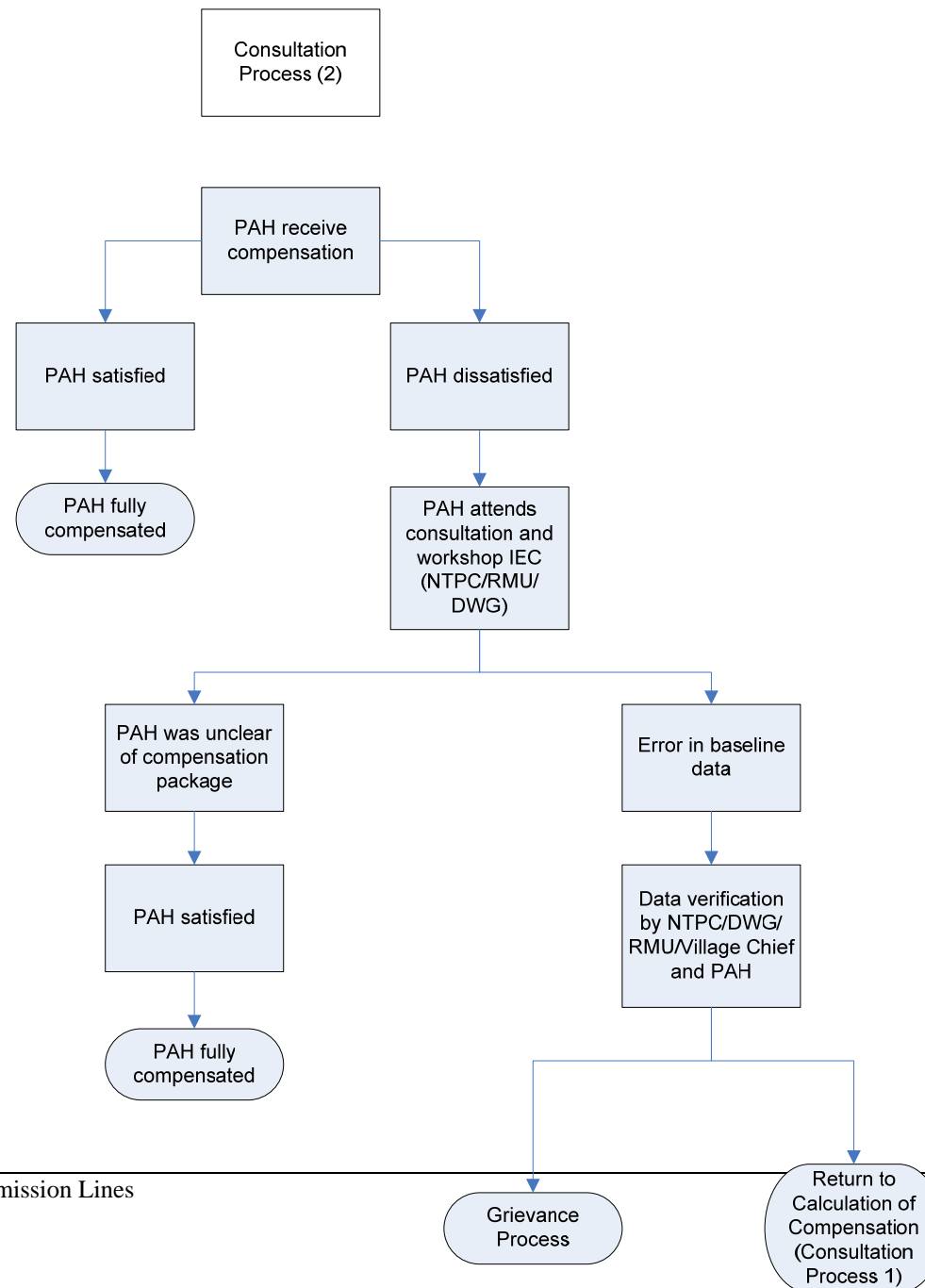


Figure 7. Flowchart of the Consultation Process (2)

The second step to the consultation process ensures proper monitoring and evaluation of the compensation of the PAHs.

3.3 Project Affected Households

There are 638 PAHs within LPA 52 to 55 as depicted below in table 2. All PAHs found in RAP 5 are classified as < 10% or as not significantly affected by the project and will be paid cash compensation and provided infrastructure replacement accordingly.

LPA	Area	Construction	No. of affected households
52	Gnommalath	Transmission Lines	194
53	Mahaxai	Transmission Lines	13
54	Mahaxai, Xe Bang Fai, Xaibouly, Kaysone Phomvirhan	Transmission Lines	423
55	Gnommalath	Access to transmission lines	8
Total			638

Table 1. PAH list per LPA

Summary of fixed assets impacted and type of disturbance per PAH is provided in annex A.

3.4 Impact and Mitigation measures

There are different types of impacts expected from the construction of the transmission line towers.

Disturbance	Impact	Social mitigation measures
<p>All fixed structures to be moved from within 12 m of 115kV centerline, 30m of 500kV centerline, and crops, plantations or forest cut.</p> <p>All fixed structures within 30m of centerline to be moved and any vegetation higher than 2 m is to be removed; crops and grazing will be allowed to continue;</p> <p>Small areas required for the footings of the towers. (between 16m X 16m to 20m X 20m)</p> <p>Some land will be disturbed during construction and stringing, but this is to occur during the dry season to minimise impact on crops</p> <p>Potential for limited disturbance along the access road alignments or along any other access which may be required.</p>	<p>Fixed structures (buildings) must be moved from Transmission Line corridor</p> <p>Productive assets or crops above 2 m or 3 m (depending on affected area classification) must be cut</p> <p>Forest over 2 m and 3m (depending on affected area classification) must be cut</p> <p>Small land areas required for footings will be acquired</p> <p>Some increase in heavy traffic along the road</p> <p>dust</p>	<p>Compensation for livelihood impacts</p> <p>Compensation for temporary or permanent loss of land and assets</p> <p>Cash compensation equal to replacement value for residential structures. For non-residential structure cash compensation to relocate structure.</p> <p>Compensation for livelihood impacts</p> <p>Compensation for temporary or permanent loss of land and assets</p> <p>Cash compensation equal to replacement value for residential structures. For non-residential structure cash compensation to relocate structure.</p> <p>Compensation for any unanticipated livelihood impacts</p>

Table 2. Type of disturbance, the impact and social mitigation measures

Annex 1. Inventory of Loss for RAP 5

Final Compensation of the Transmission Line 115 & 500 KV for Gnommalath District (LPA52)								
Name		Transmission Line 500 KV			Transmission Line 115 KV			
No	Family ID	Assets type	Type affected	Area(m2)	Assets type	Type affected	Area(m2)	% Impacted
1./ Ban Kouanephun								
1	KPH09	unproductive land	Temporary loss	500	unproductive land	Permanent loss	80	<10%
2	KPH015				Rainfed Rice Field	Temporary loss	68	<10%
3	KPH004				unproductive land	Temporary loss	420	<10%
4	KPH010	Rainfed rice field	Temporary loss	720	Rainfed Rice Field	Temporary loss	60	<10%
					unproductive land	Permanent loss	40	
						Temporary loss	450	
5	KPH21				unproductive land	Temporary loss	250	<10%
6	KPH011				unproductive land	Permanent loss	40	<10%
						Temporary loss	460	
7	KPH008				unproductive land	Permanent loss	80	<10%
						Temporary loss	1,320	
8	KPH013	unproductive land	Temporary loss	450	unproductive land	Permanent loss	80	<10%

9	KPH014				unproductive land	Permanent loss	40	<10%
						Temporary loss	580	
10	KPH025				unproductive land	Permanent loss	40	<10%
						Temporary loss	410	
11	KPH 020	unproductive land	Temporary loss	200	unproductive land	Temporary loss	735	<10%
12	KPH17	unproductive land	Temporary loss	485	unproductive land	Temporary loss	275	<10%
13	KPH03				unproductive land	Temporary loss	250	<10%
14	KPH06	unproductive land	Permanent loss	310				<10%
			Temporary loss	2,300				
15	KPH07	unproductive land	Temporary loss	250				<10%
16	KPH16	unproductive land	Permanent loss	353				<10%
			Temporary loss	2,460				
17	KPH05	unproductive land	Permanent loss	353				<10%
		unproductive land	Temporary loss	415				
18	KPH12	unproductive land	Permanent loss	256				<10%
			Temporary loss	2,580				
19	KPH019	unproductive land	Temporary loss	470				<10%
2./ Ban Khocksawang								

1	KSW03				unproductive land	Permanent loss	80	<10%
						Temporary loss	940	
2	KSW08				unproductive land	Permanent loss	80	<10%
3	KSW07	unproductive land	Permanent loss	362				<10%
			Temporary loss	2,680				
4	KSW04	unproductive land	Permanent loss	362	Garden	Permanent loss	80	<10%
5	KSW02	unproductive land	Temporary loss	950				<10%
6	KSW05				Unuse Rice season	Permanent loss	80	<10%
						Temporary loss	650	
7	KSW01	unproductive land	Permanent loss	295				<10%
			Temporary loss	1,800				
8	KSW06	unproductive land	Permanent loss	355				<10%
			Temporary loss	2,145				
3./ Ban Nongping								
1	NP02A	Rainfed rice field	Permanent loss	324	Rainfed Rice Field	Permanent loss	80	<10%
2	NP02	Wooden house	to be moved					<10%
		Old shop	to be moved					
		Animal hut	to be moved					
		Rice storage	to be moved					
		Rainfed rice field	Temporary loss	3,064	Rainfed Rice Field	Temporary loss	850	
		unproductive land	Within corridor					

3	NP04	Rice storage	to be moved					<10%
		Bamboo house	to be moved					
		unproductive land	Temporary loss	250	Garden	Temporary loss	630	
4	NP13	Garden	Temporary loss	125				<10%
5	NP01	Garden	Temporary loss	250				<10%
6	NP34	Rainfed rice field	Temporary loss	640				<10%
7	NP37	Rainfed rice field	Temporary loss		Rainfed Rice field	Temporary loss	880	<10%
8	NP020	Rainfed rice field	Temporary loss	770				<10%
9	NP19	Rainfed rice field	Temporary loss	520	Rainfed Rice field	Permanent loss	80	<10%
						Temporary loss	1,585	
10	NP36	Rainfed rice field	Permanent loss	370	Rainfed Rice field	Temporary loss	910	<10%
			Temporary loss	2,260				
11	NP16	Rainfed rice field	Temporary loss	1,250	unproductive land	Permanent loss	80	<10%
						Temporary loss	850	
12	NP35				unproductive land	Temporary loss	250	<10%
13	NP26	unproductive land	Permanent loss	395				<10%
14	NP12	unproductive land	Temporary loss	370				<10%

15	NP24				unproductive land	Permanent loss	80	<10%
16	NP09	unproductive land	Permanent loss	310	unproductive land	Permanent loss	80	<10%
						Temporary loss	1,650	
17	NP03	unproductive land	Temporary loss	150	Rainfed Rice field	Temporary loss	430	<10%
18	NP05	unproductive land	Permanent loss	289				<10%
			Temporary loss	2,860				
19	NP28	unproductive land	Temporary loss	2,150				<10%
20	NP21	unproductive land	Permanent loss	296	unproductive land	Permanent loss	80	<10%
			Temporary loss	1,260		Temporary loss	860	
21	NP37				unproductive land	Permanent loss	80	<10%
						Temporary loss	1,250	
22	NP07				unproductive land	Permanent loss	80	<10%
						Temporary loss	780	
23	NP08				unproductive land	Permanent loss	80	<10%
24	NP27				Garden	Temporary loss	300	<10%
25	NP27A				Garden	Temporary loss	250	<10%
26	NP25				Garden	Temporary loss	160	<10%
27	NP17				Garden	Temporary loss	175	<10%

4.Ban Namixay								
1	NMX 01	Rainfed rice field	Temporary loss	300	Rainfed Rice field	Temporary loss	340	<10%
2	NMX 02	Rice Field Hut	to be moved					<10%
		unproductive land	Permanent loss	368				
			Temporary loss	2,560	Rainfed Rice field	Temporary loss	450	
3	NMX 11	Bamboo house			To move			<10%
		unproductive land	Temporary loss	785	Rainfed Rice field	Temporary loss	775	
4	NMX 04				Rainfed Rice field	Temporary loss	200	<10%
5	NMX 14	Bamboo house	to be moved					<10%
		unproductive land	Within corridor					
6	NMX 13	Rainfed rice field	Permanent loss	370	Rainfed Rice field	Permanent loss	80	<10%
			Temporary loss	2,780		Temporary loss	1,605	
7	NMX 05				Rainfed Rice field	Temporary loss	540	<10%
8	NMX 07	Rainfed rice field	Temporary loss	250	Rainfed Rice field	Temporary loss	600	<10%
9	NMX 09	Rainfed rice field	Temporary loss	550				<10%
10	NMX15	Rice Field Hut	to be moved					<10%
		Rainfed rice field	Temporary loss	950	Rainfed Rice field	Permanent loss	80	
						Temporary loss	1,200	
11	NMX 12	Rainfed rice field	Temporary loss	350	Rainfed Rice field	Permanent loss	80	<10%
						Temporary loss	950	

12	NMX 03				Rainfed Rice field	Temporary loss	300	<10%
13	NMX06	unproductive land	Within corridor					<10%
14	NMX16				Rainfed Rice field	Permanent loss	80	<10%
						Temporary loss	970	
16	NMX17				Rainfed Rice field	Temporary loss	125	<10%
5./ Ban Gnommalath Tai								
1	GLT 01	Rainfed rice field	Permanent loss	364				<10%
			Temporary loss	2,136				
2	GLT02	Rainfed rice field	Temporary loss	450				<10%
6./ Ban Gnommaltah Nau								
1	GLN01	Rainfed rice field	Temporary loss	970	Rainfed Rice field	Permanent loss	80	<10%
						Temporary loss	1,850	
2	GLN 05	Rainfed rice field	Temporary loss	500	Rainfed Rice field	Temporary loss	500	<10%
3	GLN06				Rainfed Rice field	Temporary loss	400	<10%
4	GLN02				Garden	Temporary loss	550	<10%
7./ Ban Lao nagnam								
1	LN07	Rainfed rice field	Temporary loss	580				<10%
2	LN02	unproductive land	Temporary loss		unproductive land	Permanent loss		<10%
3	LN03				Upland field	Permanent loss		<10%

							80	
4	LN05				unproductive land	Temporary loss	240	<10%
5	LN06				Upland field	Temporary loss	450	<10%
6	LN01	Garden	Temporary loss	80				<10%
8./ Ban Thadkorbong								
1	TKB 40	unproductive land	Permanent loss	296				<10%
			Temporary loss	2,650				
2	TKB 08	Rainfed rice field	Permanent loss	282	Rainfed Rice Field	Permanent loss	80	<10%
			Temporary loss	2,743		Temporary loss	1,350	
3	TKB 07				Rainfed Rice Field	Temporary loss	250	<10%
4	TKB 03	Rainfed rice field	Temporary loss	1,020	Rainfed Rice Field			<10%
						Temporary loss	170	
5	TKB 37	Bamboo house	to be moved					<10%
		Rainfed rice field	Permanent loss	162	Rainfed Rice Field	Temporary loss	615	
			Temporary loss	2,480				
6	TKB 05	Well	to be moved					<10%
		Wooden house	to be moved					
		Wooden house	to be moved					
		unproductive land	Temporary loss	850	Rainfed Rice Field	Temporary loss	980	
7	TKB 21				Rainfed Rice Field	Permanent loss	80	<10%
						Temporary loss	980	

8	TKB 28	Rainfed rice field	Permanent loss	289	Rainfed Rice Field	Temporary loss	350	<10%
			Temporary loss	1,560				
9	TKB 30	Rainfed rice field	Permanent loss	289	Rainfed Rice Field	Temporary loss	200	<10%
			Temporary loss	1,350				
10	TKB 35	Rainfed rice field	Temporary loss	400	Rainfed Rice Field	Temporary loss	500	<10%
11	TKB26	Rainfed rice field	Permanent loss	297	Rainfed Rice Field	Temporary loss	230	<10%
			Temporary loss	1,850				
12	TKB 32	Rainfed rice field	Temporary loss	100				<10%
13	TKB 15	Rainfed rice field	Temporary loss	315				<10%
14	TKB 27				Rainfed Rice Field	Permanent loss	80	<10%
						Temporary loss	390	
15	TKB 34	Rainfed rice field	Temporary loss	450	Rainfed Rice Field	Temporary loss	120	<10%
16	TKB 31	Rainfed rice field	Permanent loss	99	Rainfed Rice Field	Temporary loss	500	<10%
			Temporary loss	1,250				
17	TKB 13	Rainfed rice field	Temporary loss	500	Rice field hut	Remove out of the TL		<10%
					Rainfed Rice Field	Permanent loss	80	
						Temporary loss	880	
18	TKB 23	Rice Field Hut	to be moved					<10%
		Rainfed rice field	Temporary loss	430				
19	TKB 12	Rice Field Hut	to be moved					<10%

		Garden	Permanent loss	368	Rainfed Rice Field	Permanent loss	40	
			Temporary loss	2,560		Temporary loss	350	
20	TKB 33				Rainfed Rice Field	Permanent loss	40	<10%
						Temporary loss	760	
21	TKB25	Rainfed rice field	Temporary loss	250				<10%
22	TKB 38	Garden	Permanent loss	232				<10%
			Temporary loss	2,150				
23	TKB41	unproductive land	Temporary loss					<10%
24	TKB42	unproductive land	Temporary loss					<10%
25	TKB43	unproductive land	Temporary loss					<10%
26	TKB16	Rainfed rice field	Temporary loss	335	Rainfed Rice Field	Temporary loss	670	<10%
27	TKB10				Rainfed Rice Field	Temporary loss	435	<10%
28	TKB36	unproductive land	Permanent loss	162				<10%
			Temporary loss	1,256				<10%
29	TKB 02				unproductive land	Temporary loss	525	<10%
9./ Ban Phathung								
1	PHTH005	unproductive land	Temporary loss	1,123	unproductive land	Permanent loss	80	<10%
		unproductive land	Temporary loss	450		Temporary loss	980	<10%
2	PHTH16	unproductive land	Within corridor					<10%

3	PHTH021	unproductive land	Within corridor		Garden	Temporary loss	520	<10%
4	PHTH020	unproductive land	Within corridor					<10%
5	PHTH011	unproductive land	Temporary loss	345				<10%
6	PHTH022	unproductive land	Within corridor					<10%
7	PHTH009	unproductive land	Temporary loss	500	Rainfed Rice Field	Permanent loss	80	<10%
						Temporary loss	820	<10%
8	PHTH28	Rainfed rice field	Temporary loss	220				<10%
		Rainfed rice field	Temporary loss	220				<10%
		unproductive land	Temporary loss	950				<10%
9	PHTH06	Rainfed rice field	Permanent loss	386				<10%
			Temporary loss	2,250				<10%
10	PHTH26	unproductive land	Permanent loss	386	unproductive land	Temporary loss	80	<10%
11	PHTH018	unproductive land	Temporary loss	580				<10%
12	PHTH019	unproductive land	Temporary loss	100				<10%
13	PHTH023	unproductive land	Permanent loss	320	Rainfed Rice Field	Permanent loss	80	<10%
14	PHTH002	unproductive land	Temporary loss	300				<10%
15	PHTH008	Rainfed rice field	Temporary loss	150				<10%
16	PHTH015	unproductive land	Temporary loss	220	unproductive land	Permanent loss	80	<10%

						Temporary loss	450	<10%
17	PHTH010	unproductive land	Permanent loss	353	Rainfed Rice Field	Temporary loss	920	<10%
			Temporary loss	2,230				<10%
18	PHTH025	unproductive land	Permanent loss	310	unproductive land	Permanent loss	80	<10%
			Temporary loss	2,000		Temporary loss	100	<10%
19	PHTH012	unproductive land	Temporary loss	360	unproductive land	Temporary loss	500	<10%
20	PHTH014	unproductive land	Permanent loss	200	unproductive land	Permanent loss	80	<10%
			Temporary loss	1,250		Temporary loss	820	<10%
21	PHTH04	unproductive land	Permanent loss	200	unproductive land	Permanent loss	80	<10%
			Temporary loss	1,250		Temporary loss	820	<10%
22	PHTH01	Rainfed rice field	Temporary loss	200				<10%
23	PHTH13	unproductive land	Temporary loss	200				<10%
24	PHTH003	Rainfed rice field	Temporary loss	930	unproductive land	Permanent loss	80	<10%
						Temporary loss	1,250	<10%
25	PHTH027				unproductive land	Temporary loss	560	<10%
10./ Ban Phitshikhai								
1	PH02	unproductive land	Temporary loss	350				<10%
2	PH01	unproductive land	Permanent loss	368				<10%
			Temporary loss	2,450				<10%

3	PH03				unproductive land	Permanent loss	80	<10%
						Temporary loss	1,150	<10%
11./ Ban Sangkeo								
1	NS03	Rainfed rice field	Temporary loss	375	Rainfed Rice Field	Temporary loss	670	<10%
2	NS04				Upland field	Permanent loss	40	<10%
						Temporary loss	380	
3	NS01	Rainfed rice field	Temporary loss	945	Rainfed Rice Field	Permanent loss	675	<10%
4	KV04				Rainfed Rice Field	Temporary loss	705	<10%
5	KV02	unproductive land	Permanent loss	364	unproductive land	Permanent loss	80	<10%
			Temporary loss	2,260		Temporary loss	860	<10%
6	SK16				unproductive land	Temporary loss	250	<10%
7	SK17	Rainfed rice field	Temporary loss	510				<10%
8	KV07	Rice storage	to be moved					<10%
		Barn	to be moved					
		Wooden house	to be moved					
		Housing plot	Temporary loss	270				
9	KV05				Rainfed Rice Field	Permanent loss	80	<10%
						Temporary loss	1,380	<10%
10	KV09	Barn	to be moved					<10%
		Housing plot	Within corridor					<10%

11	KV10	Housing plot	Temporary loss	230				<10%
								<10%
12	KV06	Bamboo house	to be moved					<10%
		Housing plot	Within corridor					<10%
13	KV03	unproductive land	Permanent loss	193				<10%
		Rainfed rice field	Temporary loss	576				<10%
14	SK15	unproductive land	Permanent loss	96	Rainfed Rice Field	Permanent loss	80	<10%
		Rainfed rice field	Temporary loss	250		Temporary loss	1,250	<10%
15	SK14	Rainfed rice field	Permanent loss	96				<10%
			Temporary loss	520				<10%
16	SK13	unproductive land	Within corridor					<10%
17	SK12	Upland field	Temporary loss	2,100				<10%
18	SK11	Upland field	Temporary loss	240				<10%
19	SK10	Upland field	Temporary loss	200				<10%
20	SK09	Upland field	Temporary loss	500				<10%
21	SK08	Upland field	Temporary loss	200				<10%
22	SK07	Upland field	Temporary loss	250	Upland field	Permanent loss	80	<10%
						Temporary loss	1,150	<10%
23	SK06	Upland field	Temporary loss	400				<10%
24	SK05	Upland field	Within corridor					<10%
25	SK04				Upland field	Permanent loss	40	<10%
						Temporary loss	650	<10%

26	SK03	Upland field	Permanent loss	324				<10%
			Temporary loss	1,250				
27	SK02	Upland field	Temporary loss	150	Upland field	Temporary loss	150	<10%
28	SK01				Upland field	Temporary loss	650	<10%
29	SK22				Rainfed Rice Field	Permanent loss	80	<10%
						Temporary loss	820	
30	SK21				Rainfed Rice Field	Temporary loss	540	<10%
31	KV01				Rainfed Rice Field	Permanent loss	80	
						Temporary loss	1,300	<10%
32	NS06				Rainfed Rice Field	Temporary loss	850	<10%
33	NS07				Upland field	Permanent loss	40	<10%
34	NS08				Upland field	Permanent loss	40	<10%
35	NS09	Upland field	Temporary loss	250				
36	NS10	Upland field	Temporary loss	350				<10%
37	NS11	Upland field	Temporary loss	256				
38	NS13	Upland field	Temporary loss	«õ ïö®i,				<10%
39	SK19	Upland field	Temporary loss	285				
40	SK20				Upland field	Temporary loss	240	<10%
41	SK18				unproductive land	Permanent loss	80	<10%

42	NS12				Upland field	Temporary loss	560	
12./ Ban Donepiew								
1	DP02	unproductive land	Permanent loss	193	unproductive land	Temporary loss	690	<10%
			Temporary loss	1,260				
2	DP07				Garden	Permanent loss	80	<10%
						Temporary loss	1,200	<10%
3	DP08				Garden	Temporary loss	1,300	
4	DP05	unproductive land	Permanent loss	386				<10%
			Temporary loss	2,135				
5	DP09	unproductive land	Permanent loss	386				<10%
6	DP01	Resturant	to be moved					
		Bamboo house	to be moved					<10%
		Well	to be moved					
		Froge tank	to be moved					<10%
		unproductive land	Temporary loss	124				
		unproductive land	Permanent loss	193				<10%
			Temporary loss	1,200				
13./ Ban Kanglet								
1	KL05	Garden	Temporary loss	510				<10%
2	KL02				Garden	Temporary loss	220	<10%
3	KL03	Garden	Temporary loss	190				<10%

4	KL04				Garden	Temporary loss	180	<10%
14./ Ban Nalakhouay								
1	NLK05				Rainfed Rice Field	Permanent loss	40	<10%
						Temporary loss	460	
2	NLK06	Rainfed rice field	Temporary loss	306				<10%
3	NLK02				Garden	Permanent loss	80	<10%
						Temporary loss	1,253	
4	NLK03				Rainfed Rice Field	Permanent loss	80	<10%
						Temporary loss	1,200	
Total								

Final Compensation of the transmission Line 500 KV for Xaybouly District,Savannakhet Province LPA54					
No.	Family ID	Assets type	Affected type	Area Affected (m2)	% Impacted
1		Forest Disturb	Temporary Loss	655	<10%
2		Rainfed Rice Field	Permanent Loss	341	<10%
			Temporary Loss	2680	
3		Rainfed Rice Field	Temporary Loss	285	<10%
4		Forest Disturb	Temporary Loss	80	<10%
5		Rainfed Rice Field	Permanent Loss	1790	<10%
6		Rainfed Rice Field	Permanent Loss	402	<10%
			Temporary Loss	3033	
7		Forest Disturb	Temporary Loss	765	<10%
8		Forest Disturb	Permanent Loss	402	<10%
			Temporary Loss	3280	
9		Forest Disturb	Temporary Loss	1775	<10%
10		Rainfed Rice Field	Permanent Loss	402	<10%
			Temporary Loss	3488	
11		Forest Disturb	Permanent Loss	402	<10%
			Temporary Loss	3218	
12		Forest Disturb	Temporary Loss	215	<10%
13		Rainfed Rice Field	Temporary Loss	295	<10%
14		Forest Disturb	Temporary Loss	1110	<10%
15		Rainfed Rice Field	Permanent Loss	338	<10%
			Temporary Loss	2787	
16		Rainfed Rice Field	Temporary Loss	410	<10%
17		Rainfed Rice Field	Temporary Loss	1030	<10%
18		Rainfed Rice Field	Temporary Loss	250	<10%
19		Forest Disturb	Temporary Loss	450	<10%
20		Forest Disturb	Access road	1350	<10%
21		Forest Disturb	Temporary Loss	1115	<10%

22		Forest Disturb	Access road	600	<10%
1		Rainfed Rice Field	Permanent Loss	368	<10%
			Temporary Loss	5,437	
2		Rainfed Rice Field	Temporary Loss	560	<10%
3		Rainfed Rice Field	Temporary Loss	1,530	<10%
4		Rainfed Rice Field	Temporary Loss	740	<10%
5		Rainfed Rice Field	Permanent Loss	296	<10%
			Temporary Loss	2,585	
6		Rainfed Rice Field	Permanent Loss	282	<10%
			Temporary Loss	3,867	
7		Forest Disturb	Access Road	425	<10%
8		Forest Disturb	Access Road	1,550	<10%
9		Rainfed Rice Field	Temporary Loss	1,500	<10%
1		Rainfed Rice Field	Temporary Loss	1,970	<10%
1		Rainfed Rice Field	Permanent Loss	309	<10%
			Temporary Loss	2,521	
2		Rainfed Rice Field	Permanent Loss	353	<10%
			Temporary Loss	2,260	
		Hut for Residence	moved		
3		Rainfed Rice Field	Temporary Loss	310	<10%
		Hut	moved		
4		Rainfed Rice Field	Temporary Loss	135	<10%
5		Rainfed Rice Field	Temporary Loss	118	<10%
6		Rainfed Rice Field	Temporary Loss	750	<10%
7		Rainfed Rice Field	Temporary Loss	330	<10%

8		Unuse Rice Season	Temporary Loss	1,975	<10%
			Permanent Loss	155	
9		Unuse Rice Season	Permanent Loss	155	<10%
			Temporary Loss	1,390	
10		Rainfed Rice Field	Permanent Loss	295	<10%
			Temporary Loss	4,579	
		Rainfed Rice Field	Permanent Loss	-	<10%
			Permanent Loss	760	
11		Hut	moved		<10%
1		Rainfed Rice Field	Permanent Loss	111	<10%
			Temporary Loss	732	
2		Rainfed Rice Field	Temporary Loss	1,025	<10%
3		Rainfed Rice Field	Permanent Loss	352	<10%
			Temporary Loss	2,500	<10%
4		Rainfed Rice Field	Temporary Loss	750	<10%
5		Garden	Permanent Loss	307	<10%

			Temporary Loss	4,166	
6		Rainfed Rice Field	Temporary Loss	760	<10%
7		Forest Disturb	Permanent Loss	353	<10%
			Temporary Loss	3,329	
8		Rainfed Rice Field	Temporary Loss	2,795	<10%
		Rainfed Rice Field	Permanent Loss	368	
			Temporary Loss	1,750	
9		Rainfed Rice Field	Permanent Loss	255	<10%
			Temporary Loss	1,941	
10		Rainfed Rice Field	Temporary Loss	160	<10%
11		Rainfed Rice Field	Temporary Loss	285	<10%
12		Rainfed Rice Field	Temporary Loss	2,915	<10%
13		Forest Disturb	Permanent Loss	309	<10%
			Temporary Loss	2,636	

14		Rainfed Rice Field	Temporary Loss	990	<10%
15		Rainfed Rice Field	Temporary Loss	1,090	<10%
1		Rainfed Rice Field	Permanent Loss	368	<10%
			Temporary Loss	2,950	
		Unuse Rice Season	Temporary Loss	700	
			Temporary Loss		
		Hut	moved		
2		Rainfed Rice Field	Temporary Loss	80	<10%
3		Rainfed Rice Field	Temporary Loss	100	<10%
4		Housing Plot	Temporary Loss	788	<10%
		House	Moved		
		Rice Storage	Moved		
5		Housing Plot	Temporary Loss	148	<10%
		Bamboo House	Moved	5x6	
		Rice Storage	Moved	2x3	
6		Housing Plot	Temporary Loss	107	<10%
		Rice Storage	Moved	1.9x3.1	
		Wooden House	Moved	6x10	

7		Housing Plot	Temporary Loss	145	<10%
		Rainfed Rice Field	Temporary Loss	360	
		Wooden House	Moved	8.2x14.2	
		Rice Mill	Moved	5x3.5	
		Rice Storage	Moved	3.6x4.2	
8		Housing Plot	Temporary Loss	125	<10%
		Bamboo House		5x5.5	
9		Housing Plot	Temporary Loss	105	<10%
		Rainfed Rice Field	Temporary Loss	525	
		Hut	Moved	3.6X5	
10		Rainfed Rice Field	Temporary Loss	585	<10%
11		Rainfed Rice Field	Temporary Loss	250	<10%
12		Rainfed Rice Field	Corridor		<10%
13		Housing Plot	Corridor		<10%
14		Housing Plot	Corridor		<10%
15		Housing Plot	Corridor		
16		Housing Plot	Corridor		<10%
17		Housing Plot	Corridor		<10%
		Rice Storage	Moved	3.8x3.12	

		House	Moved	7.2x12.7	
18		Housing Plot	Corridor		<10%
		House	Moved	6x6.7	
19		Housing Plot	Corridor		<10%
		Rice Storage	Moved	1.7x2.7	
		Wooden House	Moved	7.5x11.5	
20		Housing Plot	Corridor		<10%
		Bamboo House	Moved	3.5x7	
21		Housing Plot	Corridor		<10%
		Wooden House	Moved		
		Barn	Moved		
22		Rainfed Rice Field	Temporary Loss	800	<10%
23		Forest Disturb	Permanent Loss	368	<10%
			Temporary Loss	3,600	
24		Forest Disturb	Temporary Loss	1,200	<10%
		Unuse Rice Season	Permanent Loss	243	
			Temporary Loss	2,678	
25		Wooden House	Moved		<10%
1		Forest Disturb	Temporary Loss	50	<10%

2		Forest Disturb	Permanent Loss	309	<10%
			Temporary Loss	3,691	
-3		Forest Disturb	Permanent Loss	309	<10%
			Temporary Loss	3,226	
4		Forest Disturb	Permanent Loss	296	<10%
			Temporary Loss	3,204	
5		Forest Disturb	Temporary Loss	1,565	<10%
6		Forest Disturb	Permanent Loss	368	<10%
			Temporary Loss	1,785	
1		Rainfed Rice Field	Temporary Loss	1,505	<10%
2		Housing Plot	Temporary Loss	3,000	<10%
		House	Moved	6.6X9.5	
3		Rainfed Rice Field	Temporary Loss		<10%
		Rainfed Rice Field	Temporary Loss	1,100	
4		Rainfed Rice Field	Permanent Loss	184	<10%
			Temporary Loss	850	
		Rice Storage	Moved	2.5x3.7	
		House	Moved	8.4x10	
5		Rainfed Rice Field	Permanent Loss	309	<10%

			Temporary Loss	3,091	
6		Housing Plot	Temporary Loss	150	<10%
		Rice Storage	Moved	1.8x2.8	
		House	Moved	6x11	
7		Rainfed Rice Field	Permanent Loss	296	<10%
			Temporary Loss	4,800	
8		Rainfed Rice Field	Temporary Loss	1,250	<10%
9		Rainfed Rice Field	Permanent Loss	357	<10%
			Temporary Loss	3,343	
		Guard House	mm	4x6	
10		Rainfed Rice Field	Permanent Loss	368	<10%
			Temporary Loss	2,200	
11		Toilet	Moved		<10%
12		Rice Storage	Moved		<10%
13		Rice Storage	Moved		<10%
1		Rainfed Rice Field	Temporary Loss	440	<10%
2		Rainfed Rice Field	Permanent Loss	310	<10%
			Temporary Loss	3,485	
3		Rainfed Rice Field	Permanent Loss	142	<10%

			Temporary Loss	1470	
4		Rainfed Rice Field	Permanent Loss	142	<10%
			Temporary Loss	1,125	
5		Unused Rice Season	Temporary Loss	1,639	
6		Rainfed Rice Field	Temporary Loss	485	
7		Rainfed Rice Field	Temporary Loss	530	
8		Rainfed Rice Field	Permanent Loss	368	<10%
			Temporary Loss	2,682	
9		Rainfed Rice Field	Temporary Loss	410	<10%
10		Rainfed Rice Field	Temporary Loss	150	<10%
11		Rainfed Rice Field	Temporary Loss	90	<10%
12		Rainfed Rice Field	Temporary Loss	840	<10%
13		Forest Disturb	Permanent Loss	368	<10%
			Temporary Loss	2,407	
14		Forest Disturb	Temporary Loss	370	<10%
15		Rainfed Rice Field	Permanent Loss	368	<10%
			Temporary Loss	2,742	
16		Forest Disturb	Temporary Loss		<10%
17		Forest Disturb	Temporary Loss		<10%

18		Forest Disturb	Temporary Loss		<10%
1		Rainfed Rice Field	Temporary Loss	1,650	<10%
2		Forest Disturb	Permanent Loss	368	<10%
			Temporary Loss	2,870	
3		Rainfed Rice Field	Temporary Loss	1105	<10%
		Hut	Moved	5.4x14	
4		Rainfed Rice Field	Permanent Loss	368	<10%
			Temporary Loss	1,968	
5		Rainfed Rice Field	Permanent Loss	368	<10%
			Temporary Loss	3,582	
6		Rainfed Rice Field	Permanent Loss	352	<10%
			Temporary Loss	2,968	
1		Rainfed Rice Field	Permanent Loss	386	<10%
			Temporary Loss	3689	
		Forest Disturb	Permanent Loss	835	
			Temporary Loss		
1		Forest Disturb	Access road	1590	<10%

2		Forest Disturb	Access road	1475	<10%
3		Forest Disturb	Permanent Loss	309	<10%
			Temporary Loss	3881	
1		Rainfed Rice Field	Permanent Loss	386	<10%
			Temporary Loss	4864	
2		Unuse Rice Season	Temporary Loss	1385	<10%
3		Unuse Rice Season	Permanent Loss	342	<10%
			Temporary Loss	4433	
1		Forest Disturb	Permanent Loss	298	<10%
			Temporary Loss	2542	
2		Forest Disturb	Temporary Loss	1115	<10%
3		Forest Disturb	Permanent Loss	175	<10%
			Temporary Loss	3125	
4		Forest Disturb	Permanent Loss	175	<10%
			Temporary Loss	1610	
5		Forest Disturb	Permanent Loss	330	<10%
			Temporary Loss	5020	
		Rainfed Rice Field	Temporary Loss	650	

6		Rainfed Rice Field	Temporary Loss	1260	<10%
7		ໂຮງຮັກສາແຮງຮັກສາ	Permanent Loss	330	<10%
			Temporary Loss	2795	
8		Rainfed Rice Field	Temporary Loss	620	<10%
9		Rainfed Rice Field	Temporary Loss	415	<10%
10		Rainfed Rice Field	Temporary Loss	755	<10%
11		Rainfed Rice Field	Permanent Loss	338	<10%
			Temporary Loss	2632	
		Rice Field Hut	Moved		
12		Rainfed Rice Field	Temporary Loss	1030	<10%
13		Rainfed Rice Field	Temporary Loss	820	<10%
14		Rainfed Rice Field	Temporary Loss	700	<10%
		Forest Disturb	Permanent Loss	330	
			Temporary Loss	4180	
15		Forest Disturb	Permanent Loss	330	<10%
			Temporary Loss	3970	
16		Forest Disturb	Permanent Loss	330	<10%
			Temporary Loss	3640	
17		Rainfed Rice Field		1160	<10%

18		Rainfed Rice Field	Temporary Loss	975	<10%
19		Rainfed Rice Field	Permanent Loss	330	<10%
			Temporary Loss	3750	
20		Forest Disturb	Permanent Loss	175	<10%
			Temporary Loss	1,610	
21		Forest Disturb	Permanent Loss	175	<10%
			Temporary Loss	1,350	
22		Forest Disturb	Temporary Loss	1130	<10%
23		Rainfed Rice Field	Permanent Loss	386	<10%
			Temporary Loss	3206	
1		Forest Disturb	Permanent Loss	380	<10%
			Temporary Loss	3899	
2		Forest Disturb	Temporary Loss	390	<10%
3		Forest Disturb	Temporary Loss	1435	<10%
		Rainfed Rice Field	Permanent Loss	386	
			Temporary Loss	2544	
4		Forest Disturb	Permanent Loss	386	<10%
			Temporary Loss	4694	
5		Forest Disturb	Permanent Loss	330	<10%

			Temporary Loss	5260	
		Rainfed Rice Field	Permanent Loss	386	
			Temporary Loss	2534	
		Rice Field Hut	Moved		
		Animal Hut	Moved		
6		Rainfed Rice Field	Temporary Loss	1925	<10%
7		Forest Disturb	Temporary Loss	1105	<10%
8		Forest Disturb	Permanent Loss	386	<10%
			Temporary Loss	4154	
		Rainfed Rice Field	Permanent Loss	368	
			Temporary Loss	3184	
9		Forest Disturb	Temporary Loss	430	<10%
10		Forest Disturb	Temporary Loss	895	<10%
11		Forest Disturb	Temporary Loss	1040	<10%
12		Forest Disturb	Permanent Loss	386	<10%
			Temporary Loss	4569	
13		Forest Disturb	Temporary Loss	305	<10%
14		Forest Disturb	Temporary Loss	545	<10%
15		Rainfed Rice Field	Permanent Loss	193	<10%

			Temporary Loss	1057	
16		Garden	Permanent Loss	193	<10%
			Temporary Loss	1081	
17		Rainfed Rice Field	Temporary Loss	250	<10%
		Forest Disturb	Temporary Loss	2055	
18		Forest Disturb	Permanent Loss	368	<10%
			Temporary Loss	3332	
19		Forest Disturb	Temporary Loss	1500	<10%
		Rainfed Rice Field	Temporary Loss	250	
20		Forest Disturb	Permanent Loss	386	<10%
			Temporary Loss	2394	
		Rainfed Rice Field	Temporary Loss	970	
21		Rainfed Rice Field	Permanent Loss	402	<10%
			Temporary Loss	3604	
22		Rainfed Rice Field	Temporary Loss	1190	<10%
23		Rainfed Rice Field	Temporary Loss	750	<10%
		Forest Disturb	Permanent Loss	402	
			Temporary Loss	3758	
1		Forest Disturb	Temporary Loss	500	<10%

2		Forest Disturb	Temporary Loss	365	<10%
3		Forest Disturb	Temporary Loss	345	<10%
4		Unuse Rice Season	Permanent Loss	368	<10%
				3032	
5		Forest Disturb	Temporary Loss	1115	<10%
6		Rainfed Rice Field	Temporary Loss	2110	<10%
1		Forest Disturb	Permanent Loss	386	<10%
			Temporary Loss	2964	
2		Forest Disturb	Temporary Loss	1030	<10%
3		Forest Disturb	Permanent Loss	386	<10%
			Temporary Loss	3019	
4		Rainfed Rice Field	Temporary Loss	750	<10%
		Forest Disturb	Permanent Loss	740	<10%
			Temporary Loss	8625	
5		Forest Disturb	Permanent Loss	386	<10%
			Temporary Loss	4019	
6		Forest Disturb	Temporary Loss	1510	<10%
		Rainfed Rice Field	Temporary Loss	570	
7		Forest Disturb	Permanent Loss	716	<10%
			Temporary Loss	8985	

Final Compensation of the Transmission Line 500 KV for Mahaxay District LPA54

No	Family ID	Assets Type	Land affected type	Area affected (m2)	% Impacted

1		Rainfed rice field	Temporary Loss	650	<10%
2		Rainfed rice field	Permanent loss	324	<10%
			Temporary Loss	2,411	
3		Rainfed rice field	Temporary Loss	120	<10%
4		Unuse rice season	Temporary Loss	510	<10%
		Unuse rice season	Permanent loss	365	
			Temporary Loss	2,930	
5		Rainfed rice field	Temporary Loss	600	<10%
6		Rainfed rice field	Permanent loss	365	<10%
			Temporary Loss	2,490	<10%
7		Rainfed rice field	Temporary Loss	525	<10%
8		Clearing land	Temporary Loss	500	<10%
9		Unuse rice season	Permanent loss	365	<10%
			Temporary Loss	2,380	
10		Garden	Temporary Loss	510	<10%
11		Clearing land	Temporary Loss	735	<10%
12		Garden	Temporary Loss	280	<10%
13		Clearing land	Temporary Loss	700	<10%
14		Rainfed rice field	Temporary Loss	1,350	<10%
15		Rainfed rice field	Temporary Loss	200	<10%
16		Rainfed rice field	Temporary Loss	290	<10%
17		Rice field hut	To be move		<10%
		Rainfed rice field	Temporary Loss	182.5	
			Temporary Loss	1,140	
18		Rainfed rice field	Temporary Loss	182.5	<10%
			Temporary Loss	2,080	
19		Rainfed rice field	Temporary Loss	740	<10%
20		Rainfed rice field	Temporary Loss	780	<10%

21		Unuse rice season	Temporary Loss	575	<10%
1		Rainfed rice field	Temporary Loss	365	<10%
			Temporary Loss	2,465	
2		Unuse rice season	Temporary Loss	470	<10%
22		Garden	Permanent loss	398	<10%
			Temporary Loss	2,204	
		Forest Disturb	Temporary Loss	1,500	
		Rainfed rice field	Temporary Loss	690	
23		Rainfed rice field	Temporary Loss	680	<10%
24		Rainfed rice field	Permanent loss	342	<10%
			Temporary Loss	3,018	
25		Rainfed rice field	Temporary Loss	1,105	<10%
		Rainfed rice field	Temporary Loss	375	<10%
26		Rainfed rice field	Temporary Loss	141	<10%
			Temporary Loss	1,200	
27		wooden house	To be move		<10%
		small shop	To be move		
		Housing land	Temporary Loss	160	
		Rainfed rice field	Temporary Loss	500	
28		Housing plot	Temporary Loss	120	<10%
29		Rice storage	To be move		<10%
		wooden house	To be move		
		Well	To be move		
		small shop	To be move		
		Housing plot	Permanent loss	141	
			Temporrary Loss	1,250	
		Rainfed rice field	Within corridor		
30		Bamboo house	To be move		<10%
		wooden house	To be move		<10%
		Well	To be move		<10%
		Housing plot	Within corridor		<10%

31		Housing plot	Within corridor		<10%
32		wooden house	To be move		<10%
		small shop	To be move		<10%
		Well	To be move		<10%
		Housing plot	Temporary Loss	165	<10%
		Rainfed rice field	Temporary Loss	910	<10%
33		wooden house	To be move		<10%
		Well	To be move		
34		Forest Disturb	Temporary Loss	430	<10%
35		Rainfed rice field	Temporary Loss	1,035	<10%
36		Rice field hut(Barn)	To be move		<10%
37		Rainfed rice field	Within corridor		<10%
38		Rainfed rice field	Permanent loss	368	<10%
			Temporary Loss	2,232	
39		Garden	Temporary Loss	830	<10%
40		Garden	Temporary Loss	950	<10%
41		Rainfed rice field	Permanent loss	282	<10%
			Temporary Loss	2,868	
42		Rainfed rice field	Temporary Loss	445	<10%
43		Garden	Temporary Loss	250	<10%
44		Garden	Within corridor		<10%
45		Garden	Within corridor		<10%
46		Garden	Temporary Loss	215	<10%
47		Garden	Temporary Loss	305	<10%
48		Garden	Temporary Loss	20	<10%
49		Garden	Permanent loss	310	<10%
			Temporary Loss	2,570	

50		Unuse rice season	Temporary Loss	680	<10%
51		Rainfed rice field	Temporary Loss	585	<10%
52		Rainfed rice field	Temporary Loss	400	<10%
53		Rainfed rice field	Temporary Loss	1,225	<10%
54		Garden	Permanent loss	350	<10%
			Temporary Loss	3,050	<10%
55		Garden	Within corridor		<10%
56		Rainfed rice field	Permanent loss	368	<10%
			Temporary Loss	3,117	
57		Garden	Temporary Loss	325	<10%
58		Garden	Within corridor		<10%
59		Rainfed rice field	Temporary Loss	1,275	<10%
60		Garden	Within corridor		<10%
61		Garden	Within corridor		<10%
62		Garden	Temporary Loss	600	<10%
63		Garden	Temporary Loss	710	<10%
64		Garden	Temporary Loss	405	<10%
65		Garden	Permanent loss	175	<10%
			Temporary Loss	1,345	
66		Garden	Permanent loss	175	<10%
			Temporary Loss	1,475	
67		Garden	Temporary Loss	400	
68		Rainfed rice field	Permanent loss	178	<10%
			Temporary Loss	1,445	
69		Garden	Temporary Loss	250	<10%
70		Housing plot	Temporary Loss	120	<10%
71		Rainfed rice field	Permanent loss	178	<10%

			Temporary Loss	1,442	
72		Rainfed rice field	Within corridor		
73		Animal hut	To be move		<10%
		Rainfed rice field	Temporary Loss	925	
74		Housing plot	Temporary Loss	130	<10%
75		Rainfed rice field	Temporary Loss	1,095	<10%
		Rainfed rice field	Temporary Loss	2,494	
76		Rainfed rice field	Permanent loss	355	<10%
			Temporary Loss	3,080	
77		Rainfed rice field	Temporary Loss	355	<10%
78		Rainfed rice field	Temporary Loss	740	<10%
79		Rainfed rice field	Permanent loss	355	<10%
80		Rainfed rice field(User)	Temporary Loss	2,835	<10%
		Garden	Temporary Loss	235	
81		Housing plot	Temporary Loss	110	<10%
82		Housing plot	Within corridor		<10%
83		Housing plot	Within corridor		<10%
84		Bamboo house	To be move		<10%
		Housing plot	Within corridor		
85		Rice field hut(Barn)	To be move		<10%
86		Rice field hut(Barn)	To be move		<10%
87		Rice field hut(Barn)	To be move		<10%
88		Housing plot	Temporrary Loss	300	<10%
89		Rainfed rice field	Permanent loss	171	<10%
			Temporrary Loss	1,564	
90		Rainfed rice field	Within corridor	171	<10%
			Temporrary Loss	1,647	
Total					
Final Compensation of the Transmission Line 115KV for Mahaxay District LPA53					

No	Family ID	Land Type	Land Affected Type	Area(m2)	
1		Garden	Permanent loss	80	<10%
			Temporary loss	1,578	
2		Rainfed Rice field	Temporary loss	900	<10%
3		Rainfed Rice field	Temporary loss	1,500	<10%
4		Rainfed Rice field	Permanent loss	80	<10%
			Temporary loss	1,820	
5		Garden			<10%
6		Rainfed Rice field	Temporary loss	310	<10%
7		Rainfed Rice field	Temporary loss	520	<10%
1		Rainfed Rice field	Permanent loss	80	<10%
2		Rainfed Rice field	Temporary loss	1,250	<10%
3		Rainfed Rice field	Permanent loss	80	<10%
			Temporary loss	1,300	
4		Rainfed Rice field	Temporary loss	340	<10%
5		Garden	Permanent loss	80	<10%
			Temporary loss	860	
		Rainfed Rice field	Permanent loss	80	
			Temporary loss	2,450	
6		Garden	Permanent loss	90	<10%
			Temporary loss	2,810	
Total					

Final Compensation of the Transmission Line 500KV for Kaisone District LPA54						
No.	Family ID	Assets Name Type	Asset ID	Land Affected Type	Area Affected (m2)	% Impacted

1		Forest Disturb	FS01-CENB18	Permanent Loss	338	<10%
				Temporary Loss	4,782	
2		Forest Disturb	FS01-CENB20	Permanent Loss	386	<10%
				Temporary Loss	4,544	
3		Forest Disturb	FS01-CENB23	Temporary Loss	760	<10%
4		Forest Disturb	FS01-CENB17	Permanent Loss	386	<10%
				Temporary Loss	4,064	
5		Forest Disturb	FS01-CENB19	Permanent Loss	330	<10%
				Temporary Loss	2,770	
6		Rain fed rice field	RP01CENB21	Temporary Loss	920	<10%
7		Unuse Rice Season	URS01CENB22	Permanent Loss	330	<10%
				Temporary Loss	2,650	
8		Rain fed rice field	RP01CENB09	Temporary Loss	1,000	<10%
		Rice Field Hut	RH01CENB09	Moved		
9		Rain fed rice field	RP01CENB16	Temporary Loss	245	<10%
10		Rain fed rice field	RP01CENB12	Temporary Loss	80	<10%
11		Rain fed rice field	RP01CENB05	Permanent Loss	386	<10%
				Temporary Loss	2,534	
12		Rain fed rice field	RP01CENB02	Temporary Loss	525	<10%
13		Rain fed rice field	RP01CENB10	Temporary Loss	470	
14		Rain fed rice field	RP01CENB11	Temporary Loss	445	<10%
		Rice Field Hut	RH01CENB11	Moved		
15		Rain fed rice field	RP01CENB06	Temporary Loss	620	<10%
		Rice Field Hut	RH01CENB06	Moved		
16		Forest Disturb	FD01CENB13	Permanent Loss	386	<10%
				Temporary Loss	2,229	

		Rain fed rice field	RP01CENB13	Temporary Loss	530	
17		Rain fed rice field	RP01CENB08	Temporary Loss	600	<10%
		Rice Field Hut	RH01CENB08	Moved		
18		Rain fed rice field	RP01CENB04	Temporary Loss	370	<10%
		Rice Field Hut	RH-01E-NB04	Moved		
19		Rain fed rice field	RP01CENB07	Temporary Loss	125	<10%
20		Rain fed rice field	RP01CENB03	Temporary Loss	725	<10%
21		Rain fed rice field	RP01CENB01A	Permanent Loss	123	<10%
				Temporary Loss	455	
22		Rain fed rice field	RP01CENB01	Permanent Loss	123	<10%
				Temporary Loss	1,344	
23		Rain fed rice field	RP01CENB14	Temporary Loss	300	<10%
		Rice Field Hut	RH01CENB14	Moved		
24		Rain fed rice field	RP01CENB15	Cooridor		<10%
		Rain fed rice field	RP01CEBTL09	Temporary Loss	390	<10%
		Rain fed rice field	RP01CEBLT05	Permanent Loss	123	<10%
				Temporary Loss	1,266	
		Rain fed rice field	RP01CEBTL06	Temporary Loss	385	<10%
		Rain fed rice field	RP01CEBTL03	Temporary Loss	175	<10%
		Rain fed rice field	RP01CEBTL07	Temporary Loss	370	<10%
		Rain fed rice field	RP01CEBTL01	Temporary Loss	520	<10%
		Rain fed rice field	RP01CEBTL08	Permanent Loss	368	<10%
				Temporary Loss	3,122	
		Rain fed rice field	RP01CEBTL04	Temporary Loss	980	<10%
		Garden	GA01CEBTL10	Permanent Loss	297	<10%
				Temporary Loss	3,203	

		Rain fed rice field	RP01EBTL02	Permanent Loss	297	<10%
				Temporary Loss	4,833	
34		Garden	GA01ETSNY14	Temporary Loss	715	<10%
35		Garden	GA01ETSNY13	Temporary Loss	435	<10%
36		Garden	GA01ETSNY15	Permanent Loss	309	<10%
				Temporary Loss	2,786	
37		Rain fed rice field	RP01ETSNY04	Temporary Loss	375	<10%
38		Rain fed rice field	RP01ETSNY03	Temporary Loss	370	<10%
39		Rain fed rice field	RP01ETSNY01	Temporary Loss	80	<10%
40		Rain fed rice field	RP01ETSNY02	Temporary Loss	525	
41		Wet Land	WT01ETSNY19	Temporary Loss	295	<10%
42		Wet Land	WT01ETSNY18	Temporary Loss	195	<10%
43		Wet Land	WT01ETSNY21	Temporary Loss	295	<10%
44		Wet Land	WT01ETSNY10	Temporary Loss	290	<10%
45		Wet Land	WT01ETSNY20	Temporary Loss	925	<10%
46		Wet Land	WT01ETSNY08	Permanent Loss	246	<10%
				Temporary Loss	1,504	
47		Wet Land	WT01ETSNY06	Temporary Loss	270	<10%
48		Wet Land	WT01ETSNY11	Temporary Loss	1,105	<10%
49		Forest Disturb	FS01ETSNY23	Permanent Loss	296	<10%
				Temporary Loss	2,504	
50		Wet Land	WT01ETSNY05	Temporary Loss	1,075	<10%
51		Wet Land	WT01ETSNY09	Permanent Loss	295	<10%
				Temporary Loss	2,635	
52		Wet Land	WT01ETSNY07	Temporary Loss	620	<10%
53		Clearing Land	CL01ETSNY22	Temporary Loss	280	<10%

54		Unuse Rice Season	URS01ÆTSNY12	Cooridor		<10%
55		Wet Land	WT01ÆTSNY16	Permanent Loss	385	<10%
				Temporary Loss	2,340	
56		Garden	GA01ÆTSNN10	Temporary Loss	1,150	<10%
57		Rain fed rice field	RP01ÆTSNN09	Permanent Loss	295	<10%
				Temporary Loss	2,950	
58		Rain fed rice field	RP01ÆTSNN08	Temporary Loss	1,200	<10%
59		Garden	GA01ÆTSNN05	Permanent Loss	295	<10%
60		Garden	GA01ÆTSNN04	Permanent Loss	345	<10%
				Temporary Loss	4,100	
60		Forest Disturb	FD01-TSNN03	Permanent Loss	300	<10%
				Temporary Loss	2,760	
		Rain fed rice field	RP02ÆTSNN03	Temporary Loss	850	
62		Rain fed rice field	RP01ÆTSNN06	Temporary Loss	410	<10%
63		Rain fed rice field	RP01ÆTSNN01	Permanent Loss	402	<10%
				Temporary Loss	2,850	
		Bamboo House	HO01-TSSN01	Moved		
		Hut	H01-TSNN01	Moved		
		Rice Storage	RS01-TSNN01	Moved		
		Forest Disturb	FD01-TSNN01	Permanent Loss	325	
				Temporary Loss	2,680	
64		Rain fed rice field	RP01ÆTSNN02	Temporary Loss	340	<10%
65		Wet Land	WT01-TSNN15	Temporary Loss	1,150	<10%
66		Wet Land	WT01-TSNN11	Temporary Loss	1,035	<10%
67		Wet Land	WT01-TSNN13	Temporary Loss	80	<10%
68		Wet Land	WT01-TSNN14	Temporary Loss	100	<10%
69		Rain fed rice field	RP01-TSNN03A	Temporary Loss	500	<10%

70		Garden	GA01EKK07	Permanent Loss		<10%
				Temporary Loss	1,005	
71		Rain fed rice field	RP01EKK06	Temporary Loss	325	<10%
		Rain fed rice field	RP02EKK06	Temporary Loss	325	
72		Rain fed rice field	RP01EKK05	Temporary Loss	723	<10%
73		Rain fed rice field	RP01EKK01	Permanent Loss	330	<10%
				Temporary Loss	1,897	
74		Rain fed rice field	RP01EKK08	Temporary Loss	350	<10%
75		Rain fed rice field	RP02EKK04	Temporary Loss	255	<10%
76		Rain fed rice field	RP01EKK02	Permanent Loss	268	<10%
				Temporary Loss	3,142	
77		Rain fed rice field	RP01EKK03	Cooridor	268	<10%

Final Compensation of the Transmission Line 500KV for Xebangfai district LPA54						
No.	Family ID	Asstes Type	Land Affected Type	Area Affected (m2)		% Impacted
1		Unuse Rice Season	Permanent Loss	353		<10%
			Temporary Loss	3,397		
2		Forest Disturb	Permanent Loss	282		<10%
			Temporary Loss	3,308		
3		Garden	Temporary Loss	180		<10%
4		Garden	Temporary Loss	250		<10%
5		Garden	Access road	780		<10%
6		Garden	Temporary Loss	740		<10%
7		Rainfed Rice Field	Temporary Loss	785		<10%
8		Rainfed Rice Field	Temporary Loss	295		<10%

9		Rainfed Rice Field	Permanent Loss	368		<10%
			Temporary Loss	2,882		
10		Rainfed Rice Field	Temporary Loss	535		<10%
11		Rainfed Rice Field	Temporary Loss	310		<10%
12		Rainfed Rice Field	Temporary Loss	815		<10%
13		Rainfed Rice Field	Permanent Loss	368		<10%
			Temporary Loss	2,567		
14		Rainfed Rice Field	Permanent Loss	368		<10%
			Temporary Loss	2,562		
15		Forest Disturb	Temporary Loss	815		<10%
16		Forest Disturb	Temporary Loss	535		<10%
17		Rainfed Rice Field	Temporary Loss	480		<10%
18		Rainfed Rice Field	Permanent Loss	368		<10%
			Temporary Loss	3,132		
19		Forest Disturb	Temporary Loss	260		<10%
20		Forest Disturb	Temporary Loss	50		<10%
21		Forest Disturb	Temporary Loss	485		<10%
22		Forest Disturb	Permanent Loss	353		<10%
			Temporary Loss	2,040		
23		Garden	Temporary Loss	100		<10%
24		Forest Disturb	Temporary Loss	50		<10%
25		Forest Disturb	Temporary Loss	1,180		<10%
26		Garden	Permanent Loss	184		<10%
			Temporary Loss	2,847		
		Brick house	relocate			
27		Clearing Land	Temporary Loss	412		<10%
28		Forest Disturb	Temporary Loss	100		<10%
29		Garden	Temporary Loss	535		<10%
30		Forest Disturb	Temporary Loss	370		<10%
31		Forest Disturb	Permanent Loss	325		<10%
			Temporary Loss	2,500		

		Garden	Temporary Loss	665		
		Forest Disturb	Permanent Loss	386		
			Temporary Loss	2,879		
32		Garden	Temporary Loss	500		<10%
33		Garden	Temporary Loss	680		<10%
34		Rainfed Rice Field	Temporary Loss	740		<10%
35		Garden	Permanent Loss	325		<10%
			Temporary Loss	4,175		
36		Guard House	relocate			<10%
37		Rainfed Rice Field	Temporary Loss	350		<10%
38		Garden	Corridor			<10%
39		Housing Plot	Temporary Loss	315		
40		Garden	Permanent Loss	402		<10%
			Temporary Loss	2,533		
41		Garden	Temporary Loss	1,035		<10%
42		Garden	Permanent Loss	326		<10%
			Temporary Loss	2,164		
43		Forest Disturb	Temporary Loss	900		<10%
44		Rainfed Rice Field	Temporary Loss	350		<10%
45		Forest Disturb	Temporary Loss	55		<10%
46		Housing Land	Permanent Loss	340		<10%
			Temporary Loss	1,350		
		Rice Field Hut	relocate			
47		Rainfed Rice Field	Temporary Loss	745		<10%
48		Forest Disturb	Permanent Loss	368		<10%
			Temporary Loss	2532		
		Rainfed Rice Field	Temporary Loss	600		
49		Rainfed Rice Field	Temporary Loss	500		<10%
50		Rainfed Rice Field	Permanent Loss	358		<10%

			Temporary Loss	2,792		
51		Rainfed Rice Field	Temporary Loss	500		<10%
52		Unuse Rice Season	Temporary Loss	250		<10%
53		Forest Disturb	Permanent Loss	368		<10%
			Temporary Loss	2,882		
54		Garden	Permanent Loss	289		<10%
			Temporary Loss	3,100		
55		Garden	Temporary Loss	900		<10%
56		Garden	Temporary Loss	500		<10%
57		Garden	Temporary Loss	500		<10%
58		Forest Disturb	Permanent Loss	368		<10%
			Temporary Loss	2,882		
59		Clearing Land	Permanent Loss	368		<10%
			Temporary Loss			
60		Forest Disturb	Permanent Loss	365		<10%
			Temporary Loss	2,885		
61		Unuse Rice Season	Permanent Loss	386		<10%
			Temporary Loss	2,865		
62		Housing Plot	Permanent Loss	291		<10%
			Temporary Loss	1,586		
63		Housing Plot	Permanent Loss	97		<10%
			Temporary Loss	529		
64		Housing Plot	Temporary Loss	150		<10%
65		Garden	Temporary Loss	320		<10%

66		Clearing Land	Temporary Loss	665		<10%
67		Rainfed Rice Field	Permanent Loss	289		<10%
			Temporary Loss	2,450		
68		Rainfed Rice Field	Permanent Loss	324		<10%
			Temporary Loss	2,350		
		Clearing Land	Permanent Loss	324		
			Temporary Loss	2,561		
69		Garden	Temporary Loss	725		<10%
70		Rainfed Rice Field	Permanent Loss	256		<10%
			Temporary Loss	2,216		
71		Rice field hut	relocate			<10%
		Unser Rice season	Access road	560		
72		Unser Rice season	Access road	600		<10%
73		Unser Rice season	Access road	850		<10%
74		Unser Rice season	Access road	750		<10%
75		Forest disturb	Temporary Loss	100		<10%
76		Rice Field House	relocate			<10%