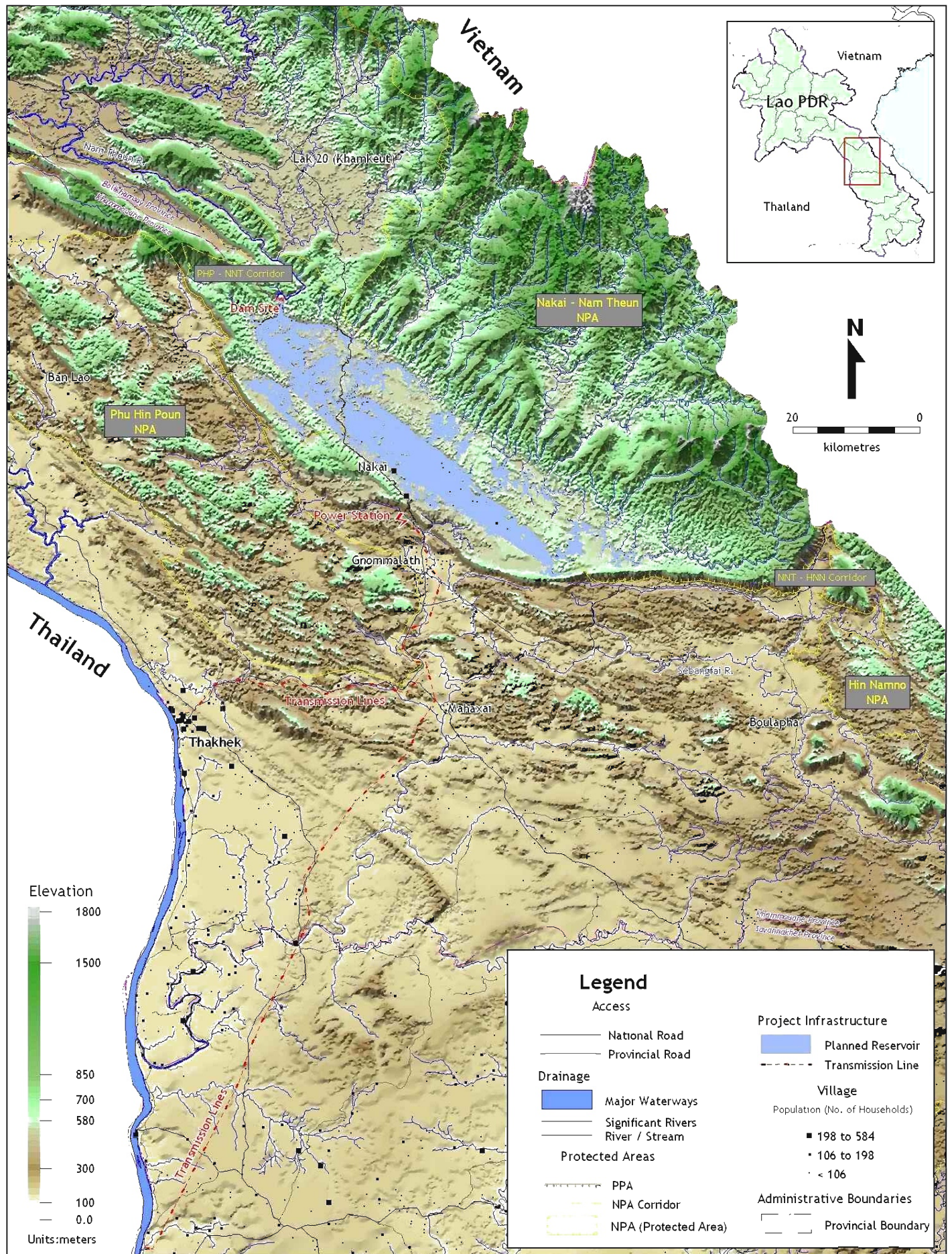


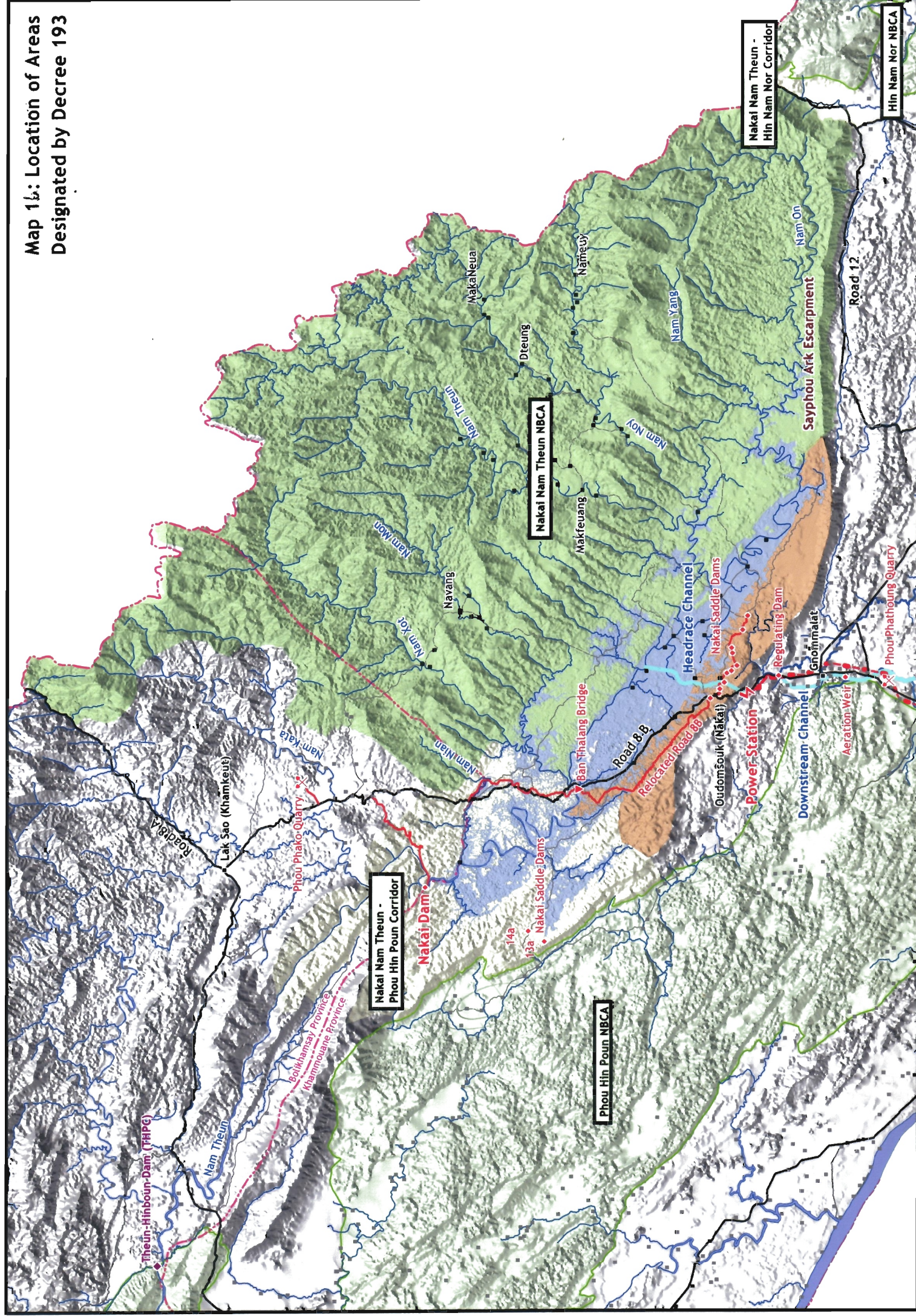
GENERAL ANNEX 6.

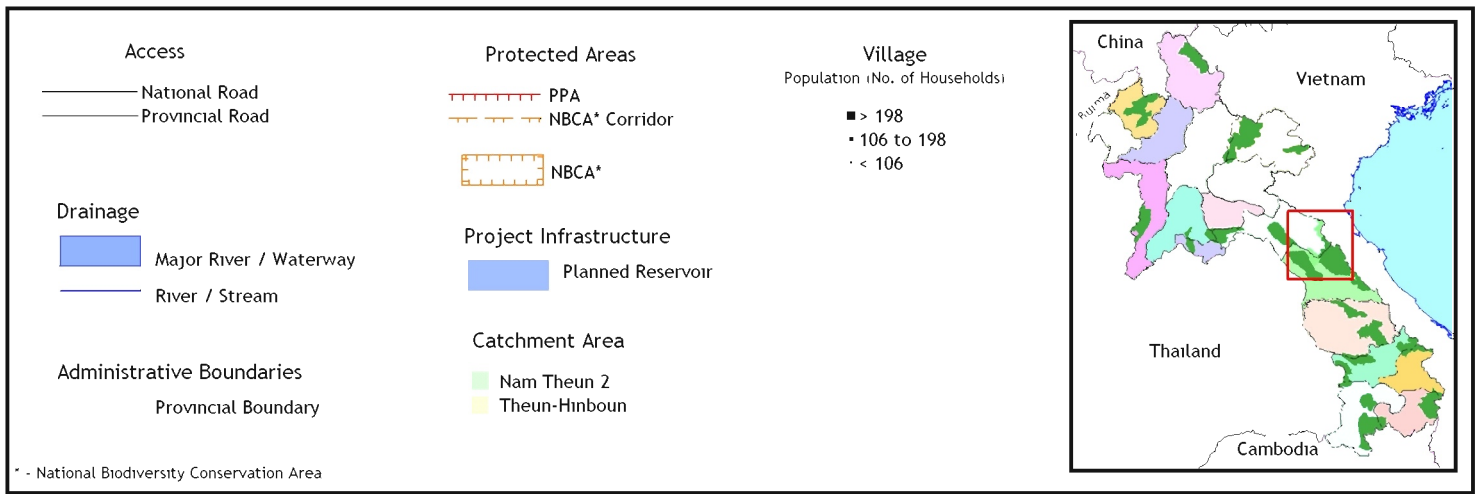
Folio of GIS maps

Map 1: Nam Theun 2 Project Location Diagram (showing DEM)



Map 16: Location of Areas Designated by Decree 193





GoL - NT2 WMIPA
SEMFOP

Map 2: Rendered View of
the Nakai Plateau

Showing: Planned NT2 Reservoir
Water Depth (Maximum Inundation)

August 2002	NT2 WMIPA SEMFOP-1
Terran GIS	m2, Village Boundaries, WOR

GoL - NT2 WMIPA
SEMFOP

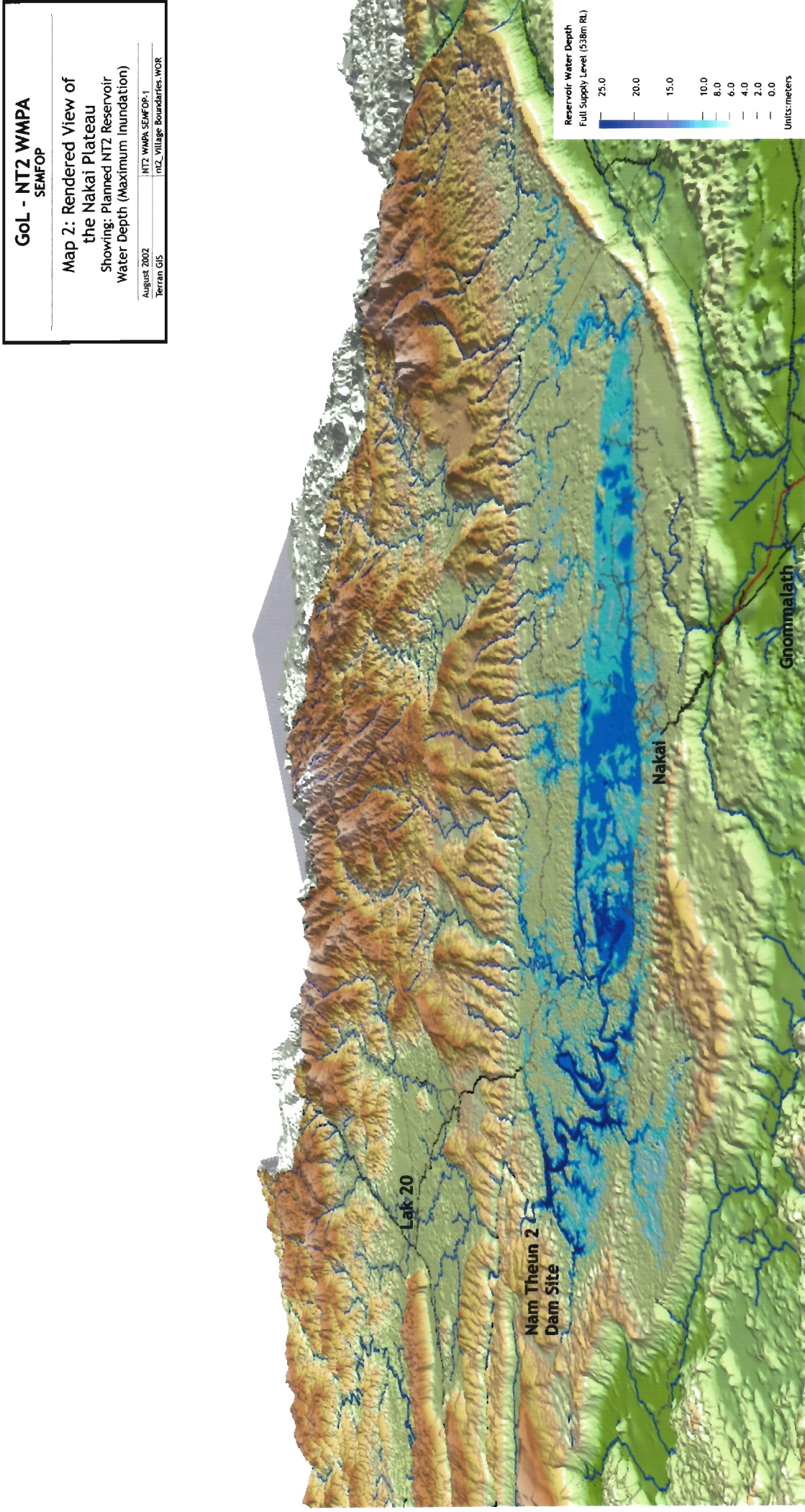
Map 2: Rendered View of
the Nakai Plateau
Showing: Planned NT2 Reservoir
Water Depth (Maximum Inundation)

August 2002	NT2 WMIPA SEMFOP-1
Terran GIS	m2. Village Boundaries.WOR

GoL - NT2 WMIPA
SEMFOP

Map 2: Rendered View of
the Nakai Plateau
Showing: Planned NT2 Reservoir
Water Depth (Maximum Inundation)

August 2002	NT2 WMIPA SEMFOP-1
Terran GIS	m2. Village Boundaries.WOR



GoL - NT2 WMPA
SEMFOP

Map 2: Rendered View of the Nakai Plateau
Showing: Planned NT2 Reservoir
Water Depth (Maximum Inundation)

August 2002
Terran GIS

NT2 WMPA SEMFOP.1
nt2_Village_Boundaries.WOR

Reservoir Water Depth
Full Supply Level (538m RL)

25.0
20.0
15.0
10.0
8.0
6.0
4.0
2.0
0.0

Units:meters

Lak 20

Nam Theun 2
Dam Site

Nakai

Gnommalath

GoL - NT2 WMPA
SEMFOP

Map 2: Rendered View of
the Nakai Plateau
Showing: Planned NT2 Reservoir
Water Depth (Maximum Inundation)

August 2002
Terran GIS

NT2 WMPA SEMFOP.1
nt2_Village_Boundaries.WOR

Lak 20

Nam Theun 2
Dam Site

Nakai

Gnommalath

Reservoir Water Depth
Full Supply Level (538m RL)

25.0
20.0
15.0
10.0
8.0
6.0
4.0
2.0
0.0

Units: meters

GoL - NT2 WMPA
SEMFOP

Map 2: Rendered View of
the Nakai Plateau
Showing: Planned NT2 Reservoir
Water Depth (Maximum Inundation)

August 2002
Terran GIS

NT2 WMPA SEMFOP.1
nt2_Village_Boundaries.WOR

Lak 20

Nam Theun 2
Dam Site

Nakai

Gnommalath

Reservoir Water Depth
Full Supply Level (538m RL)

25.0
20.0
15.0
10.0
8.0
6.0
4.0
2.0
0.0

Units: meters

GoL - NT2 WMPA
SEMFOP

Map 2: Rendered View of
the Nakai Plateau
Showing: Planned NT2 Reservoir
Water Depth (Maximum Inundation)

August 2002
Terran GIS

NT2 WMPA SEMFOP.1
nt2_Village_Boundaries.WOR

Lak 20

Nam Theun 2
Dam Site

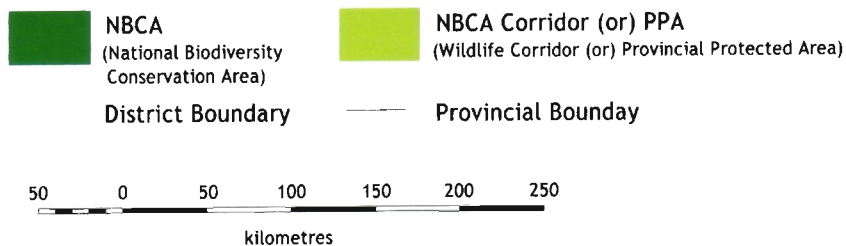
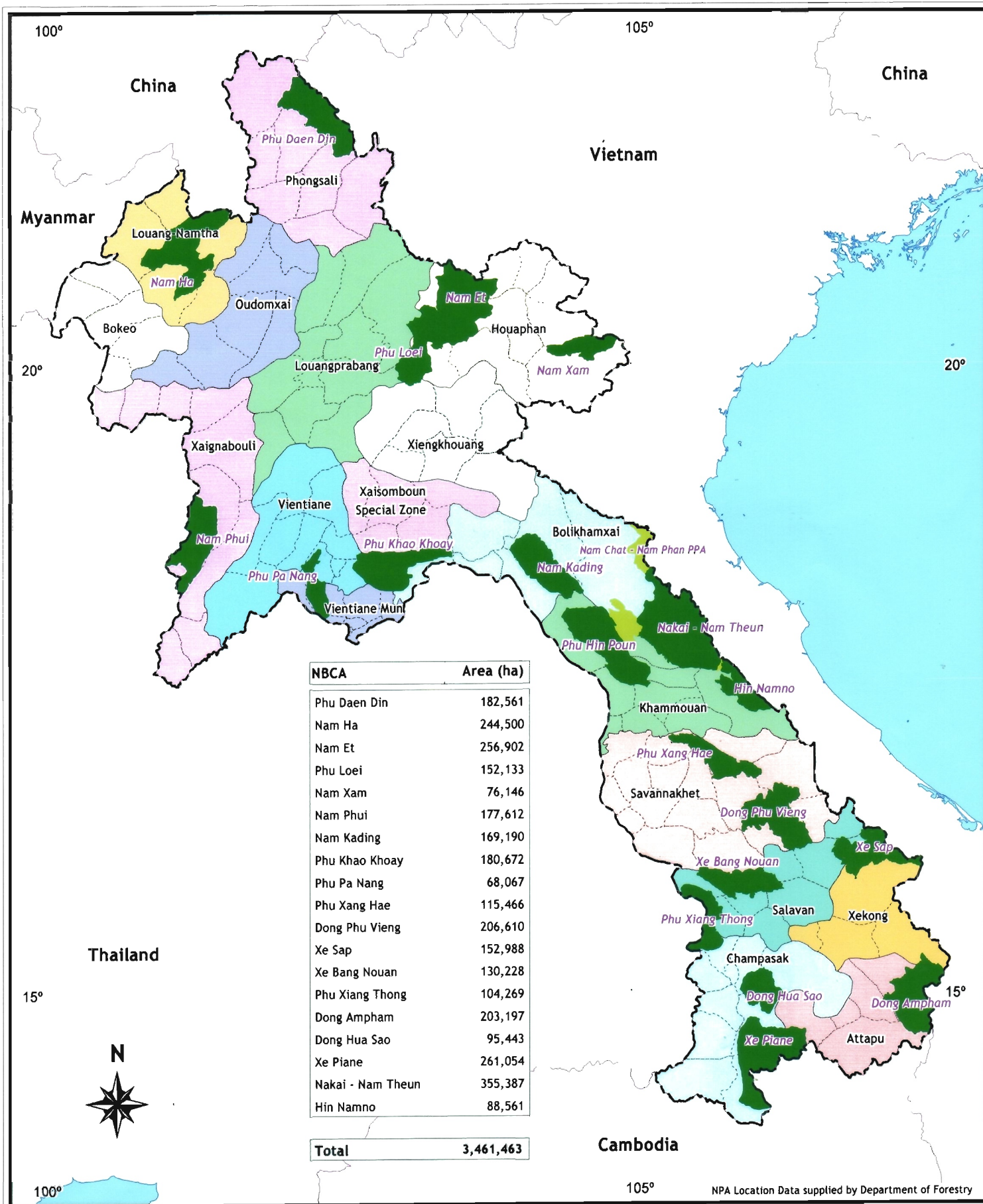
Nakai

Gnommalath

Reservoir Water Depth
Full Supply Level (538m RL)

25.0
20.0
15.0
10.0
8.0
6.0
4.0
2.0
0.0

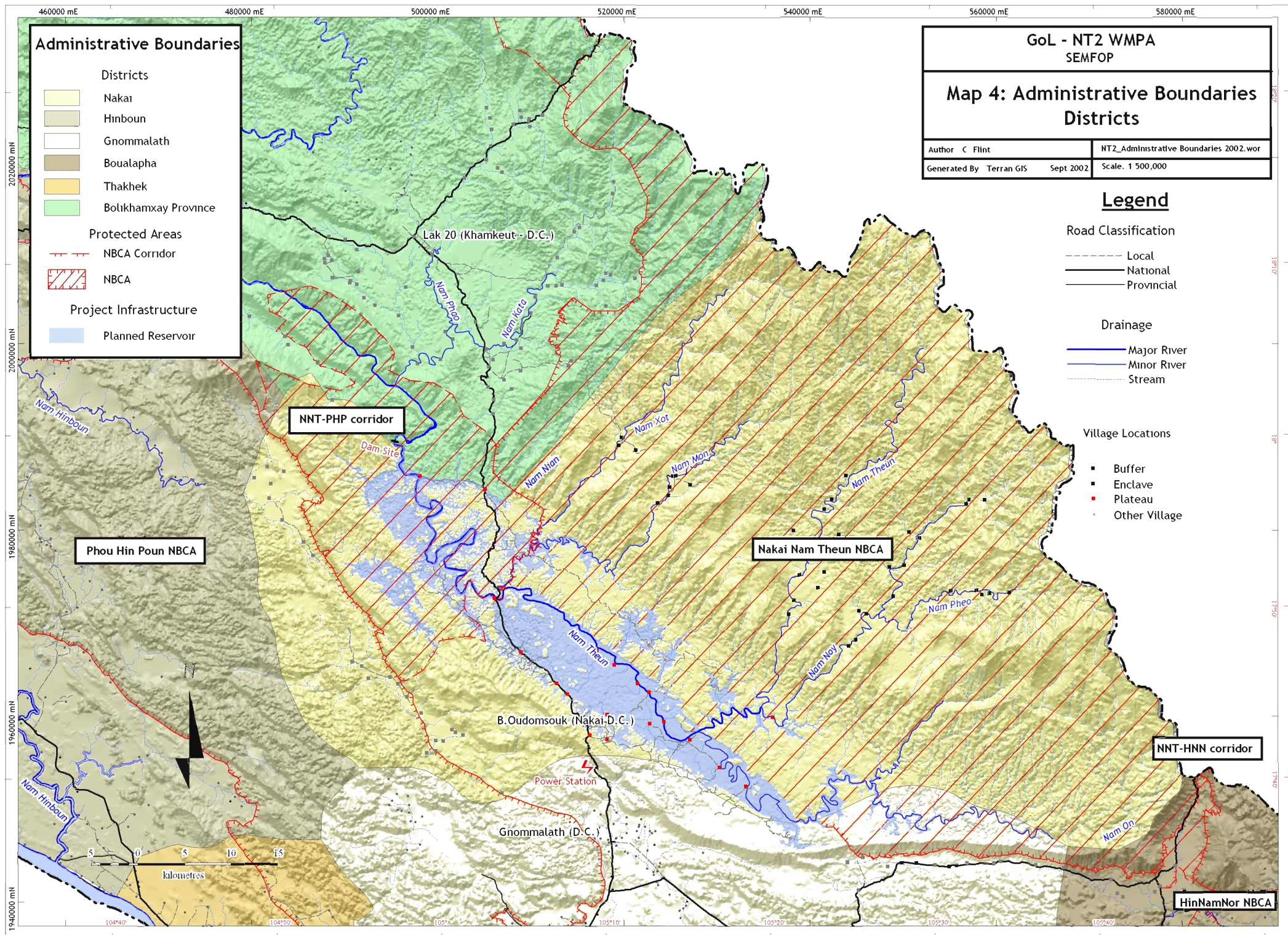
Units:meters

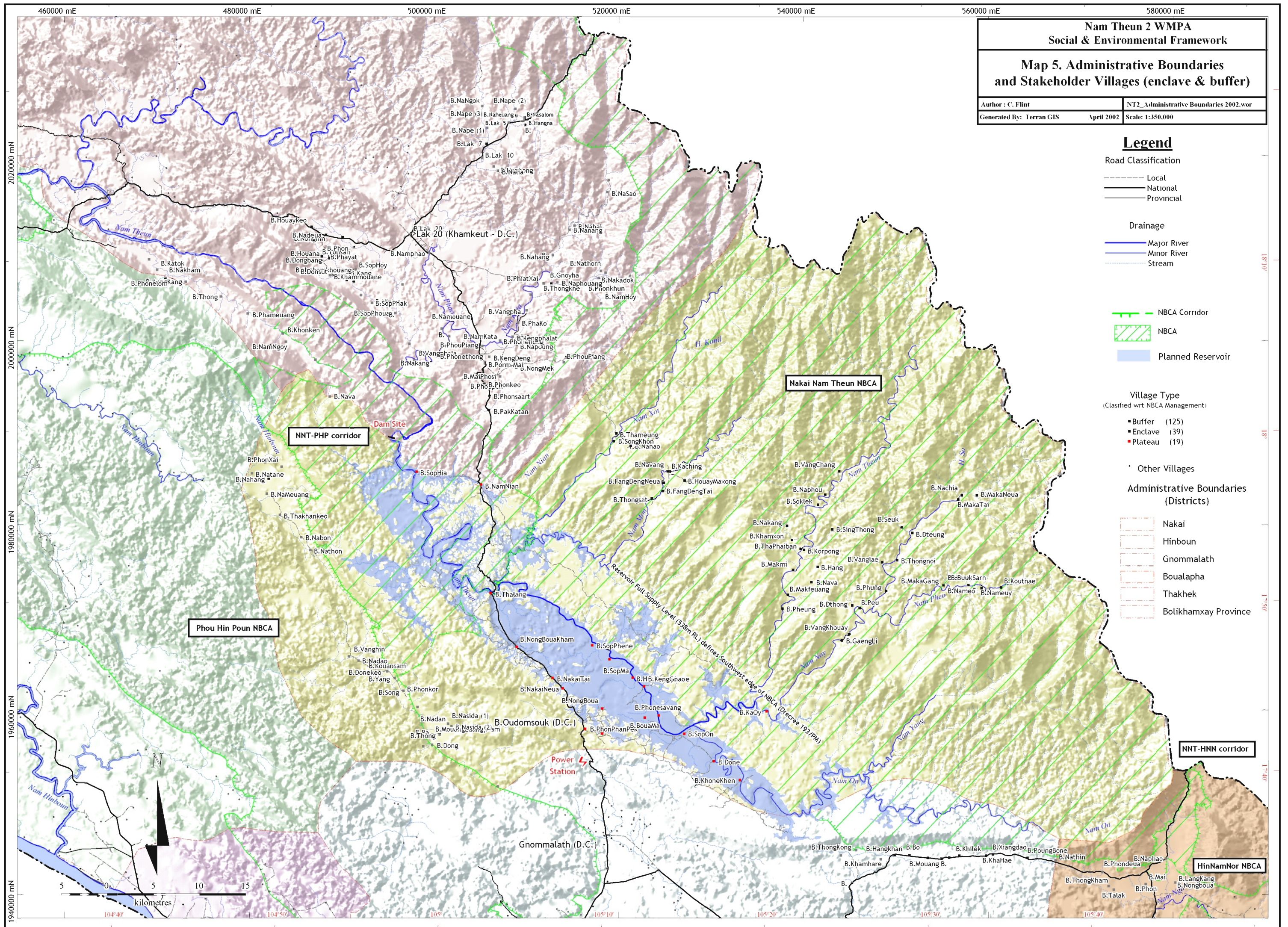


GoL - NT2 WMPA SEMFOP

Map 3: National Biodiversity Conservation Areas in Lao PDR

Sept 2002
NT2 WMPA SEMFOP-1
Lao_NPAs.WOR









Legend

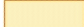
Enclave & Buffer

Village Boundaries (CPAWM, DoF Survey 1996)

-  Agriculture / Swidden
-  Claimed Forest
-  Unclaimed Forest
-  Village Location (2002)

Plateau Villages




(Internal NTEC Survey 1998)

-  Village Boundary (Approx)

Protected Areas

-  NPA
-  NPA Corridor

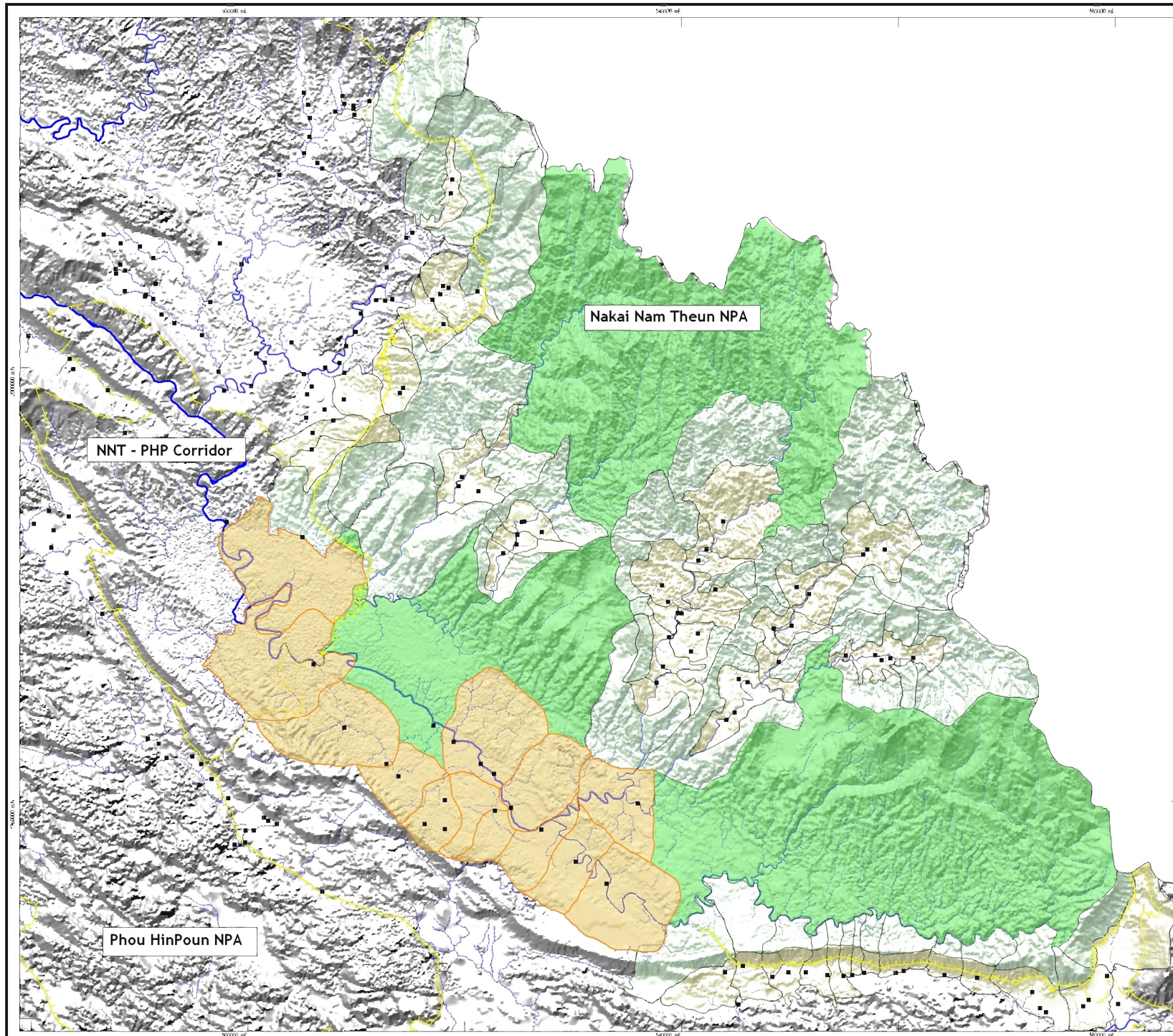
Drainage

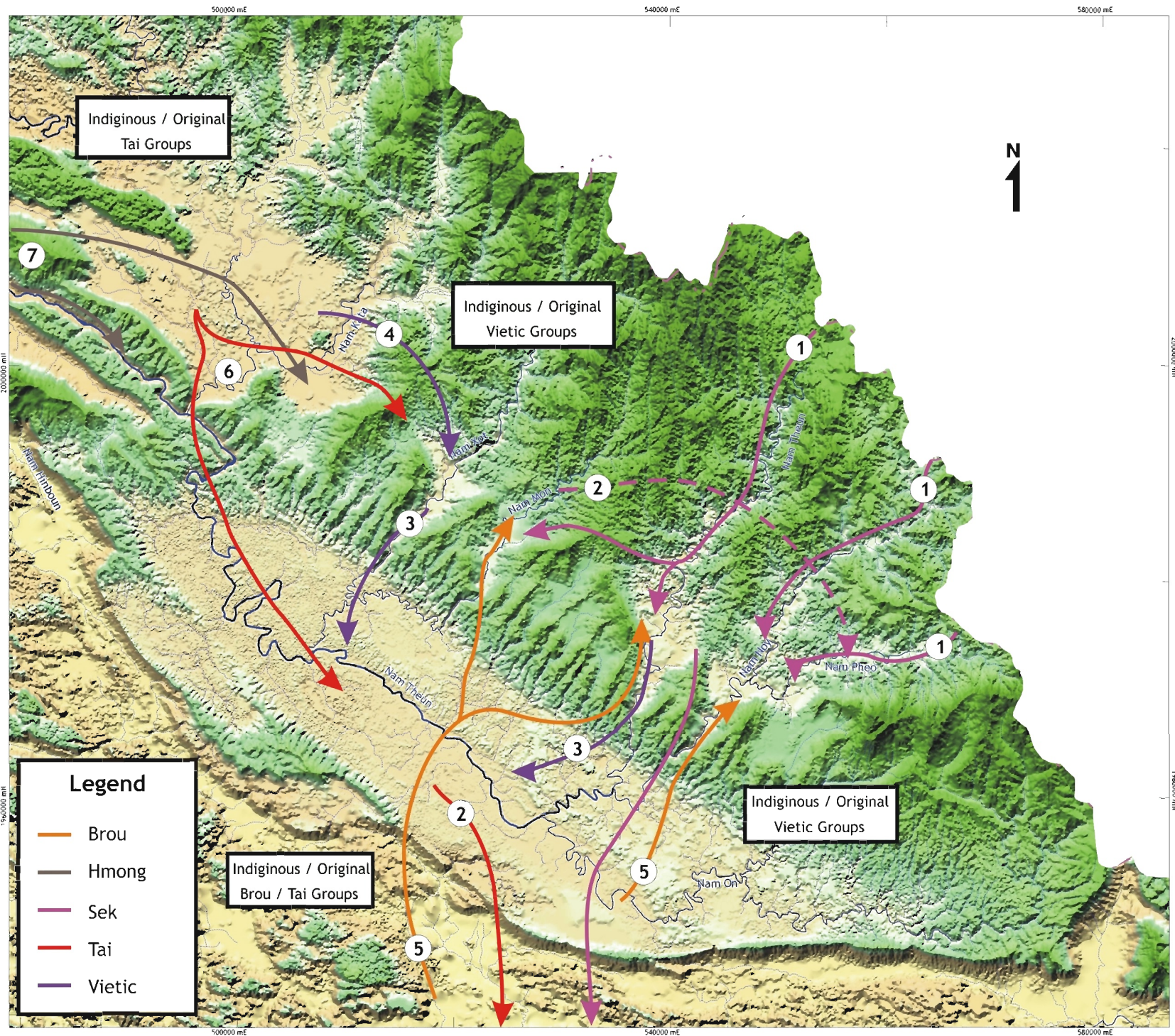
-  Major River
-  Minor River
-  Stream

N
1



kilometres
Scale: 1:500,000





NT2 Hydropower Project Social Development Plan

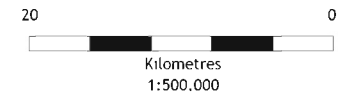
Historical Migrations of Major Regional Ethnic Groups

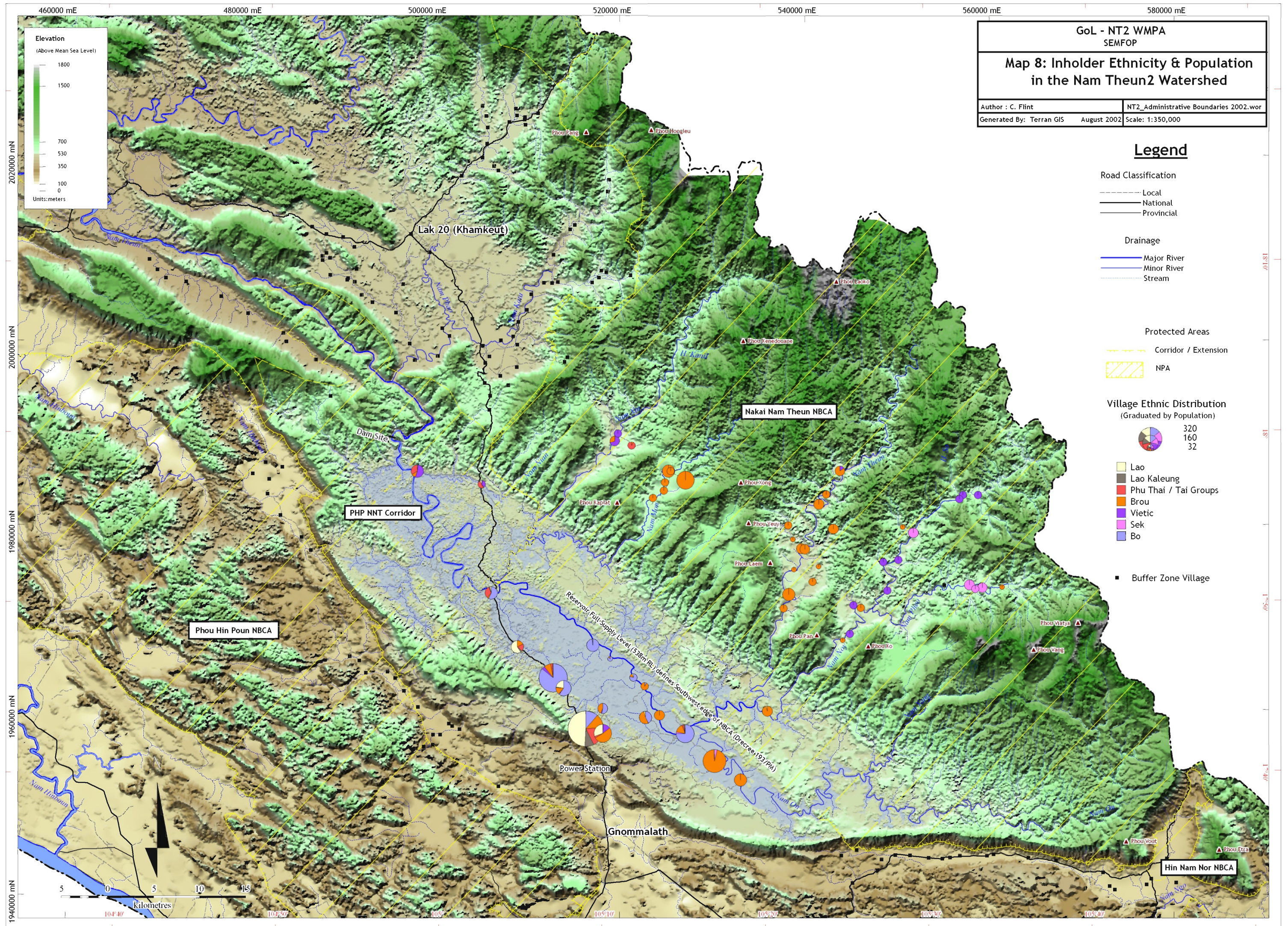
December 2003
Terran GIS

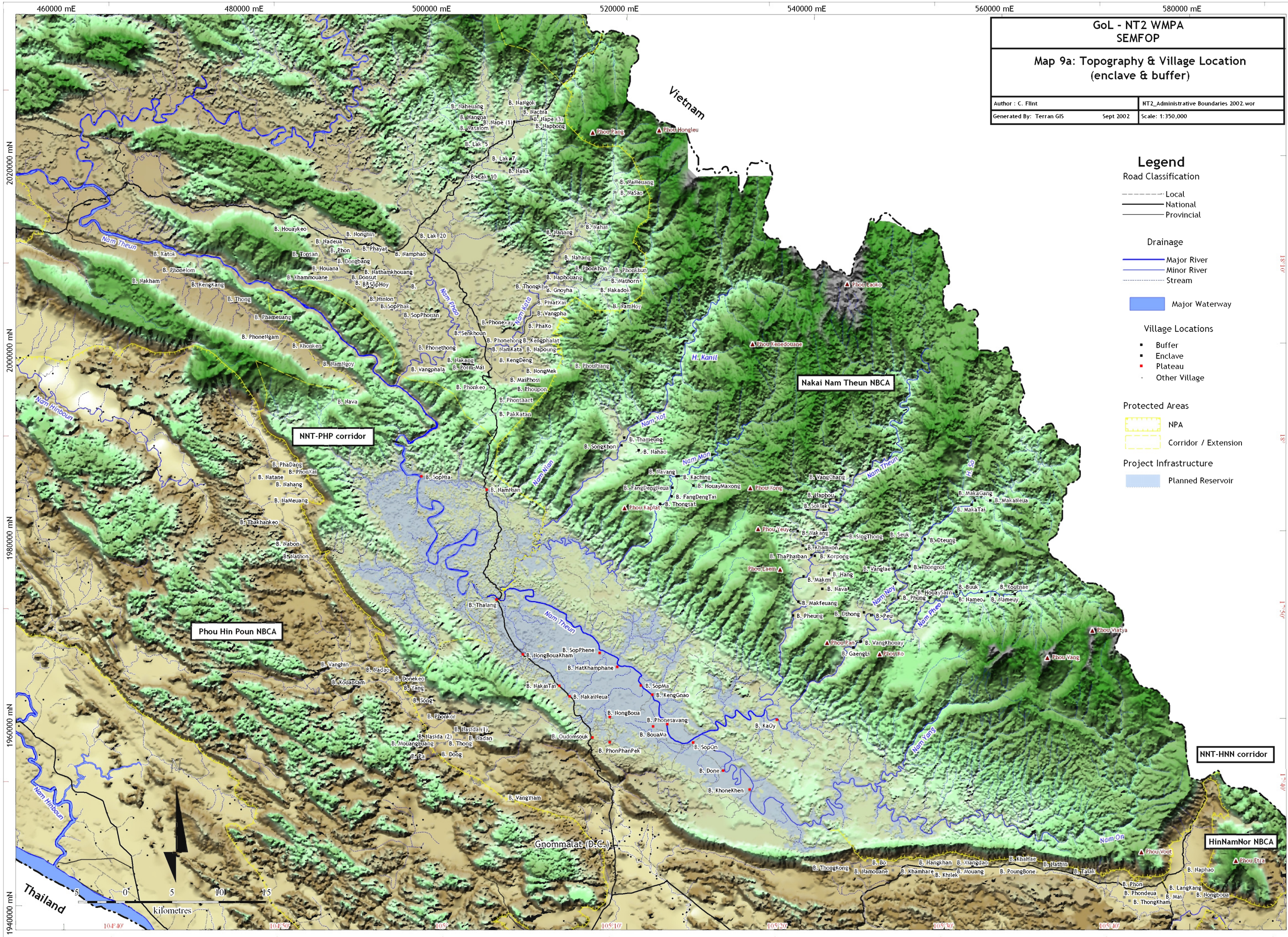
Scale: 1 500,000
Migrations.cdr

Major Migrations

- (1) Sek Migrations - from early 18th Century
- (2) Forced resettlement of Tai, Sek and other groups by Thai - mid 19th century
- (3) Movement of Vietic (Melang) onto Nakai Plateau - Late 19th century
- (4) Movement of Vietic Groups (Phong & Kri) - Late 19th century
- (5) Brou Migration onto Nakai Plateau & Catchment Area - Late 19th century
- (6) Recent Tai migration into Catchment Area
- (7) Recent Hmong Migration into Catchment Area







GoL - NT2 WMPA
SEMFOP

Map 9a: Topography & Village Location
(enclave & buffer)

Author : C. Flint

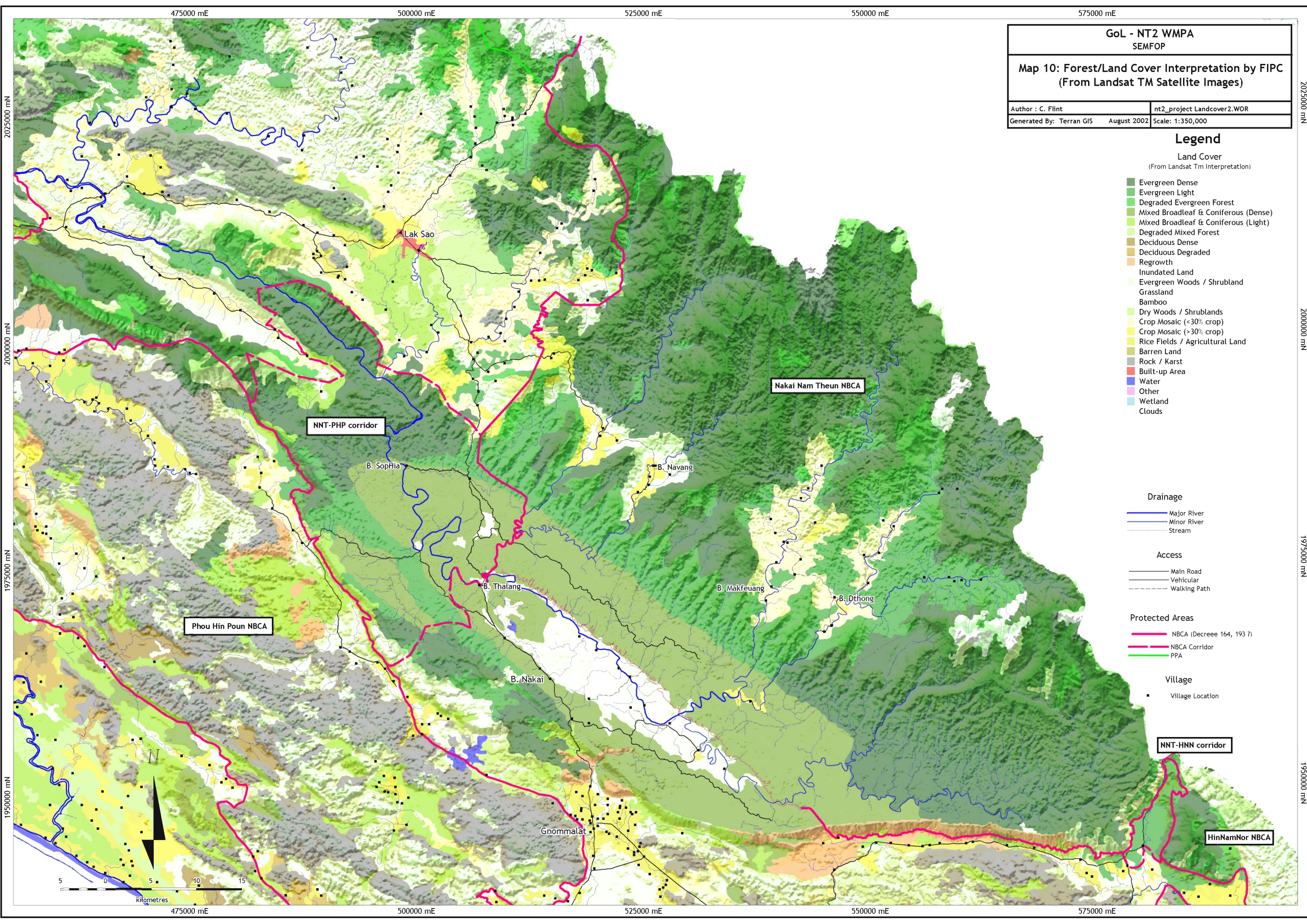
NT2_Administrative Boundaries 2002.wor

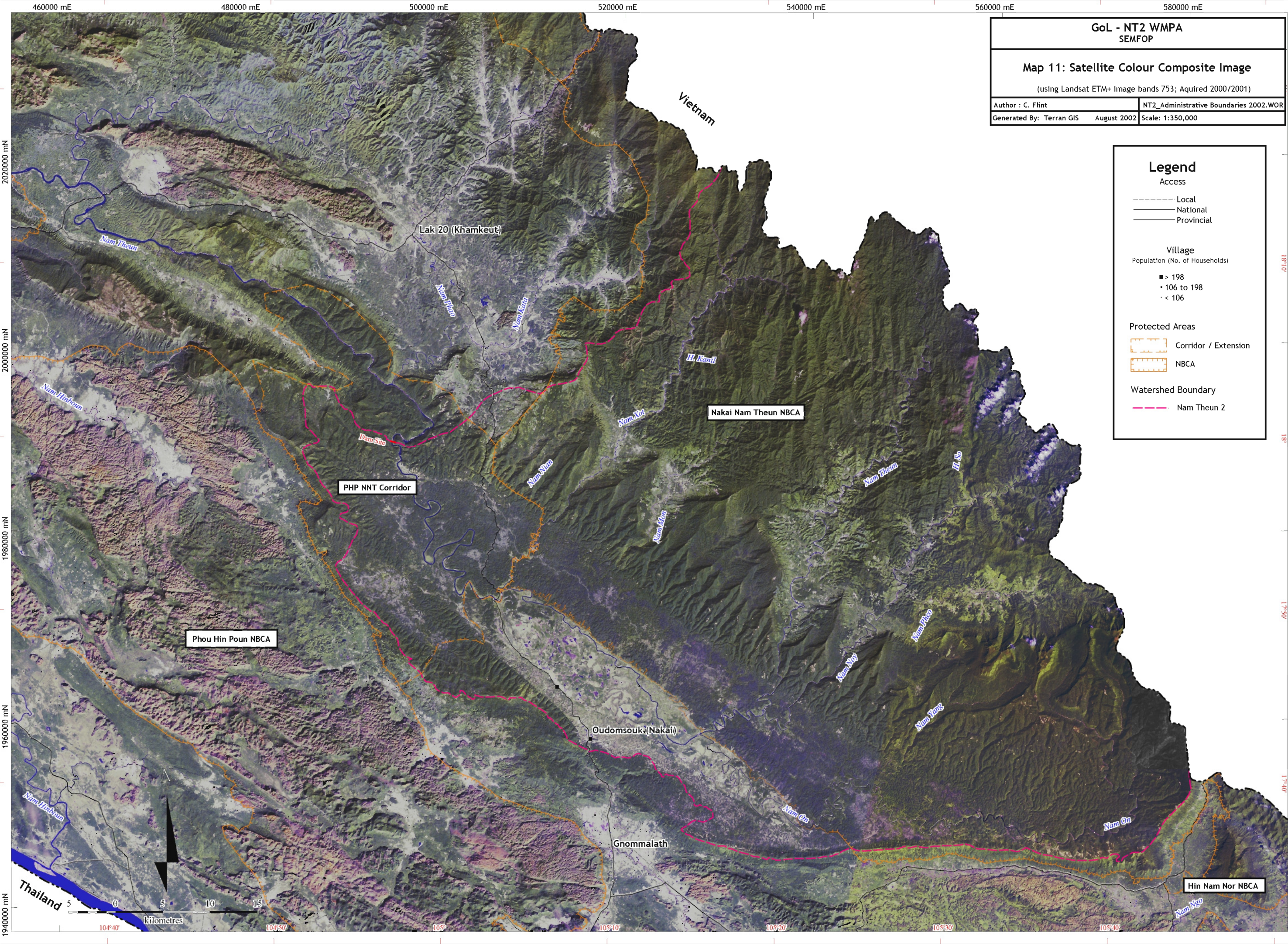
Generated By: Terran GIS

Sept 2002

Scale: 1:350,000

- Legend**
- Road Classification**
- Local
 - National
 - Provincial
- Drainage**
- Major River
 - Minor River
 - Stream
- Major Waterway
- Village Locations**
- Buffer
 - Enclave
 - Plateau
 - Other Village
- Protected Areas**
- NPA
 - Corridor / Extension
- Project Infrastructure**
- Planned Reservoir





GoL - NT2 WMPA
SEMFOP

Map 11: Satellite Colour Composite Image
(using Landsat ETM+ image bands 753; Aquired 2000/2001)

Author : C. Flint

NT2_Administrative Boundaries 2002.WOR

Generated By: Terran GIS

August 2002

Scale: 1:350,000

Legend

Access

----- Local

----- National

----- Provincial

Village

Population (No. of Households)

■ > 198

▪ 106 to 198

· < 106

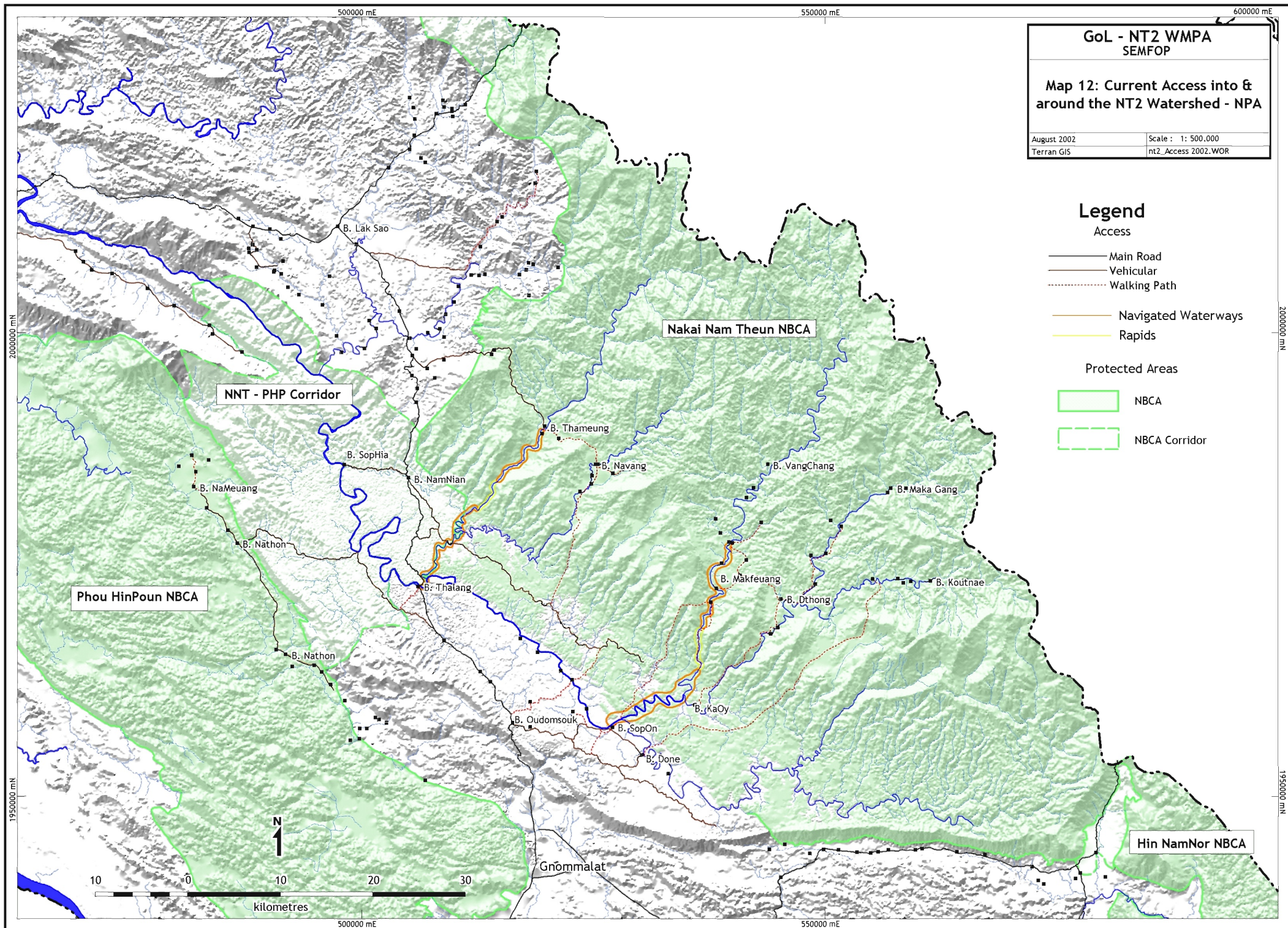
Protected Areas

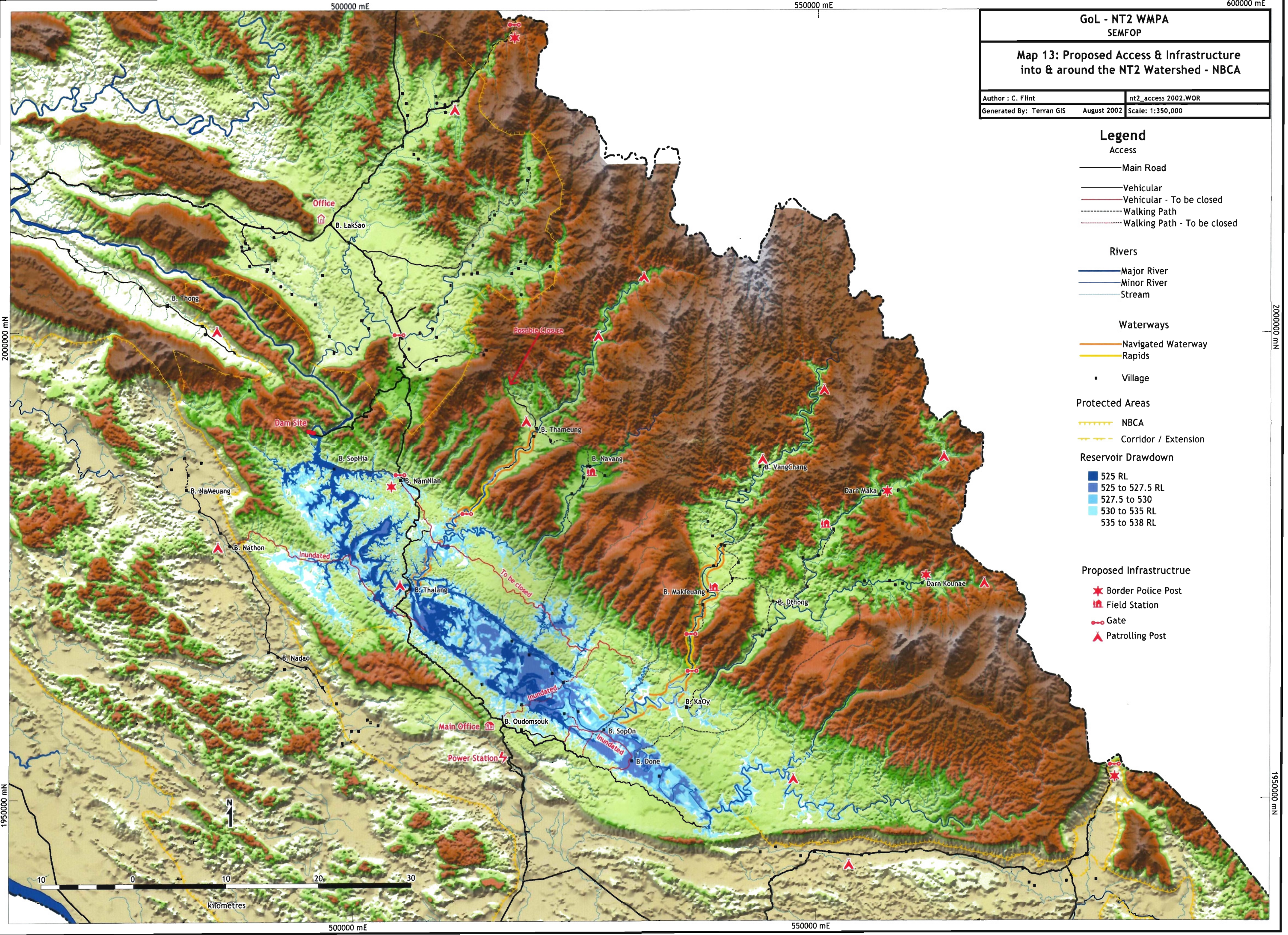
Corridor / Extension

NBCA

Watershed Boundary

----- Nam Theun 2





GoL - NT2 WMPA
SEMPOP

Map 13: Proposed Access & Infrastructure
into & around the NT2 Watershed - NBCA

Author : C. Flint

nt2_access 2002.WOR

Generated By: Terran GIS

August 2002

Scale: 1:350,000

- Legend
- Access

Main Road

Vehicular

Vehicular - To be closed

Walking Path

Walking Path - To be closed
- Rivers

Major River

Minor River

Stream
- Waterways

Navigated Waterway

Rapids
- Village
- Protected Areas

NBCA

Corridor / Extension
- Reservoir Drawdown

525 RL

525 to 527.5 RL

527.5 to 530

530 to 535 RL

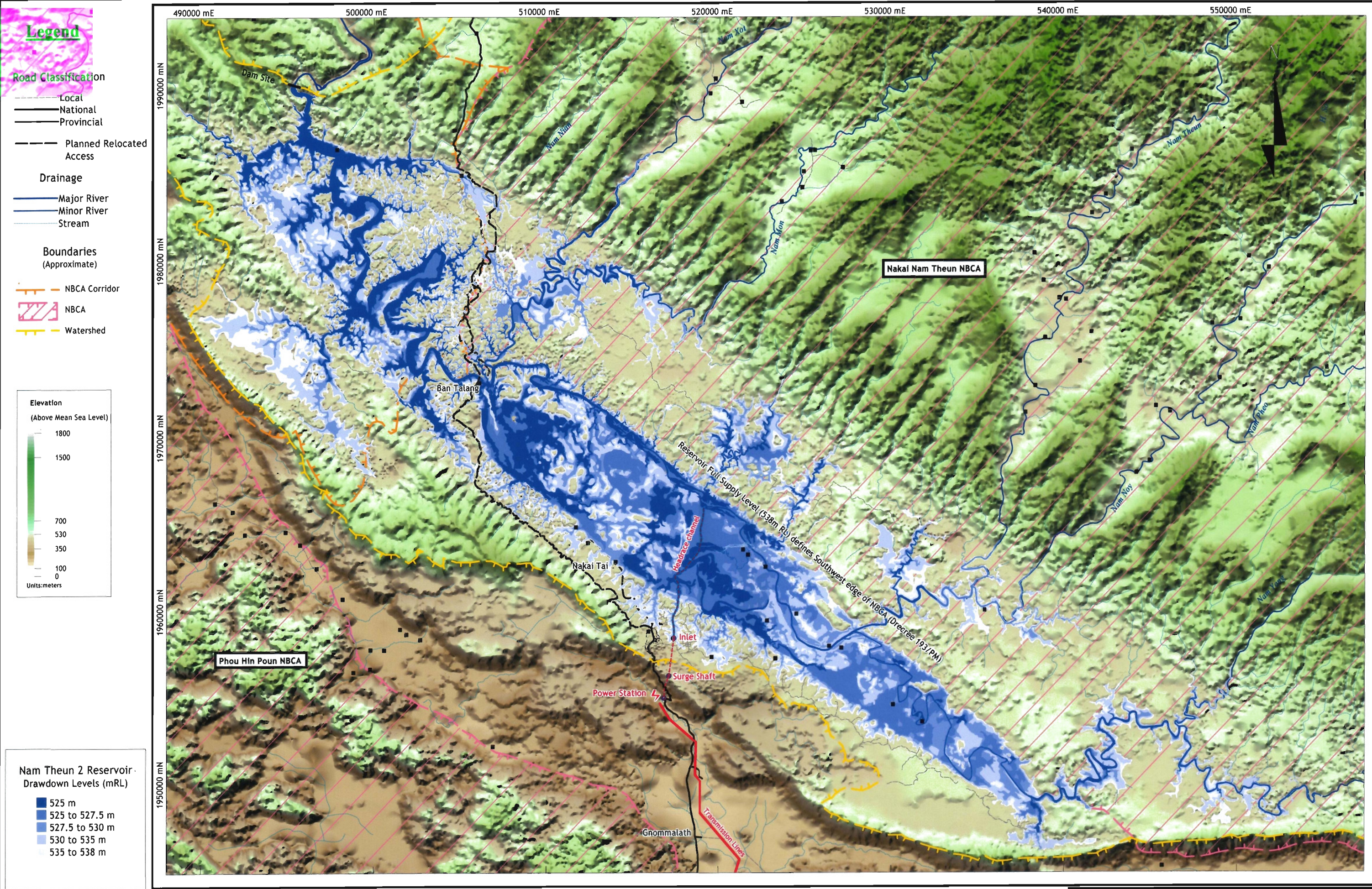
535 to 538 RL
- Proposed Infrastructure

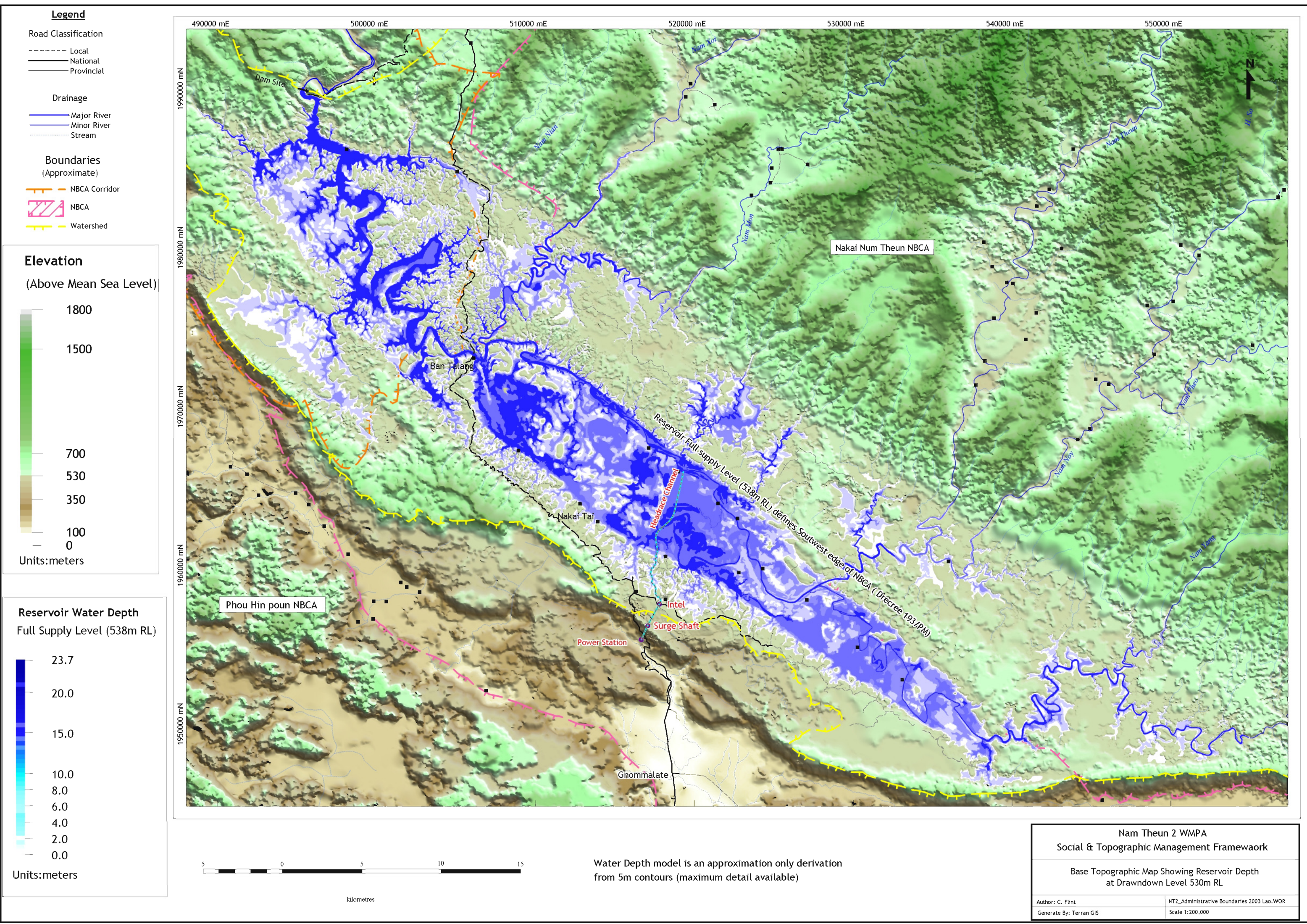
Border Police Post

Field Station

Gate

Patrolling Post





Legend

Road Classification

- Local
- National
- Provincial

Drainage

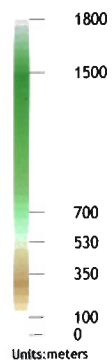
- Major River
- Minor River
- Stream

Boundaries (Approximate)

- NBCA Corridor
- NBCA
- Watershed

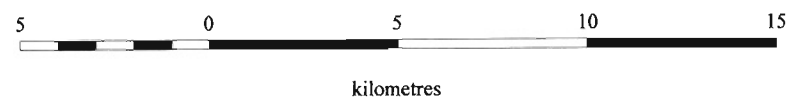
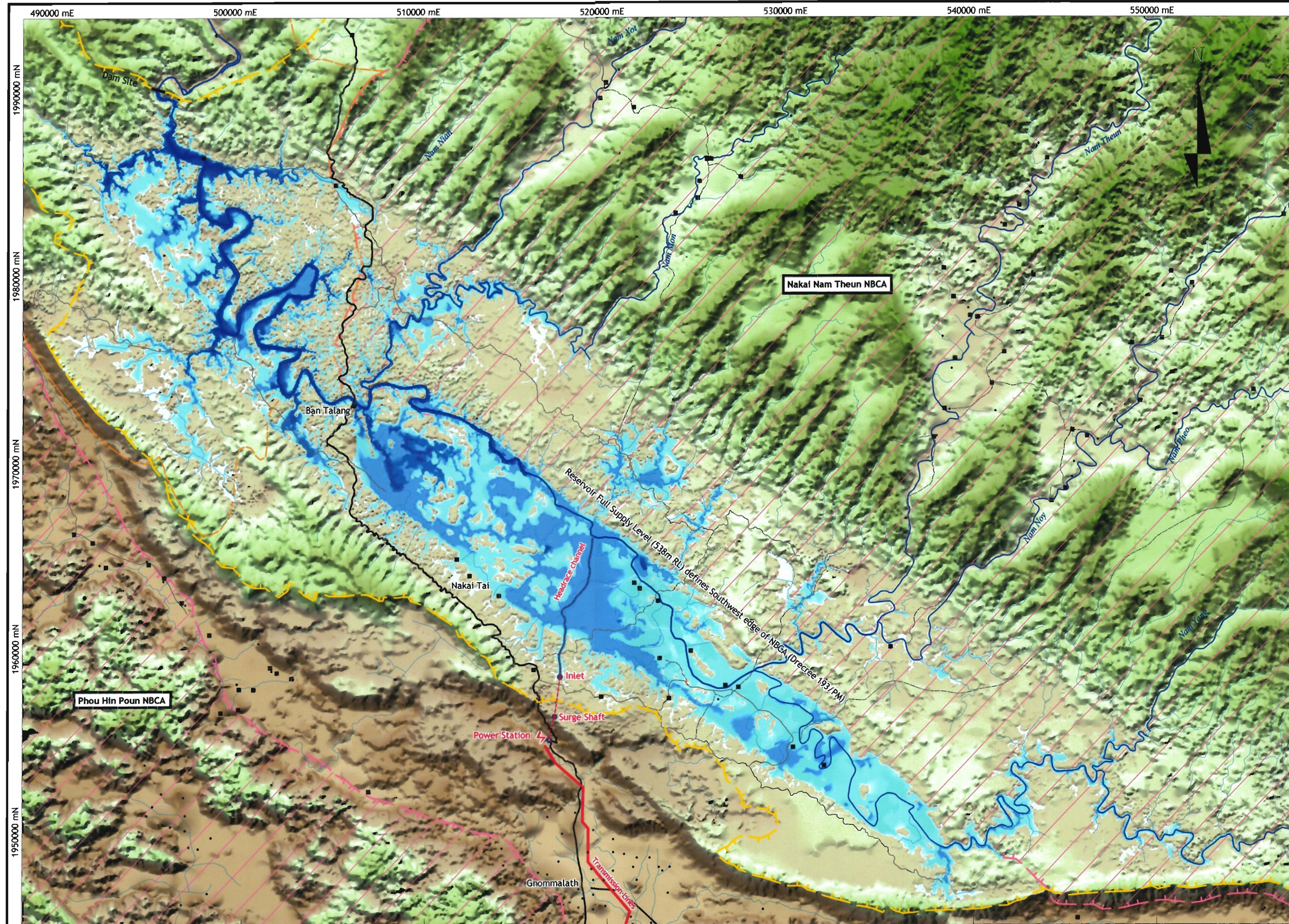
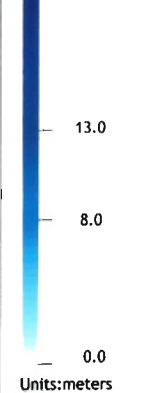
Elevation

(Above Mean Sea Level)



Reservoir Water Depth

Inundation 535m RL
20.7 (Est. Max Depth)



Water Depth model is an approximation only due to derivation from 5m contours (maximum detail currently available)

Map 15.2:

Nam Theun 2 WMPA Social & Environmental Management Framework

Base Topographic Map Showing Reservoir Depth at Drawdown Level 535m RL

Author : C. Flait

Generated By: Terran GIS

April 2002

NT2_Administrative Boundaries 2002.wor

Scale: 1:200,000

Legend

Road Classification

- Local
- National
- Provincial

Drainage

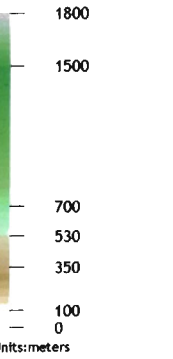
- Major River
- Minor River
- Stream

Boundaries
(Approximate)

- NBCA Corridor
- NBCA
- Watershed

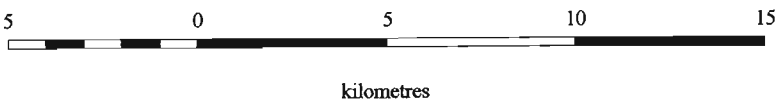
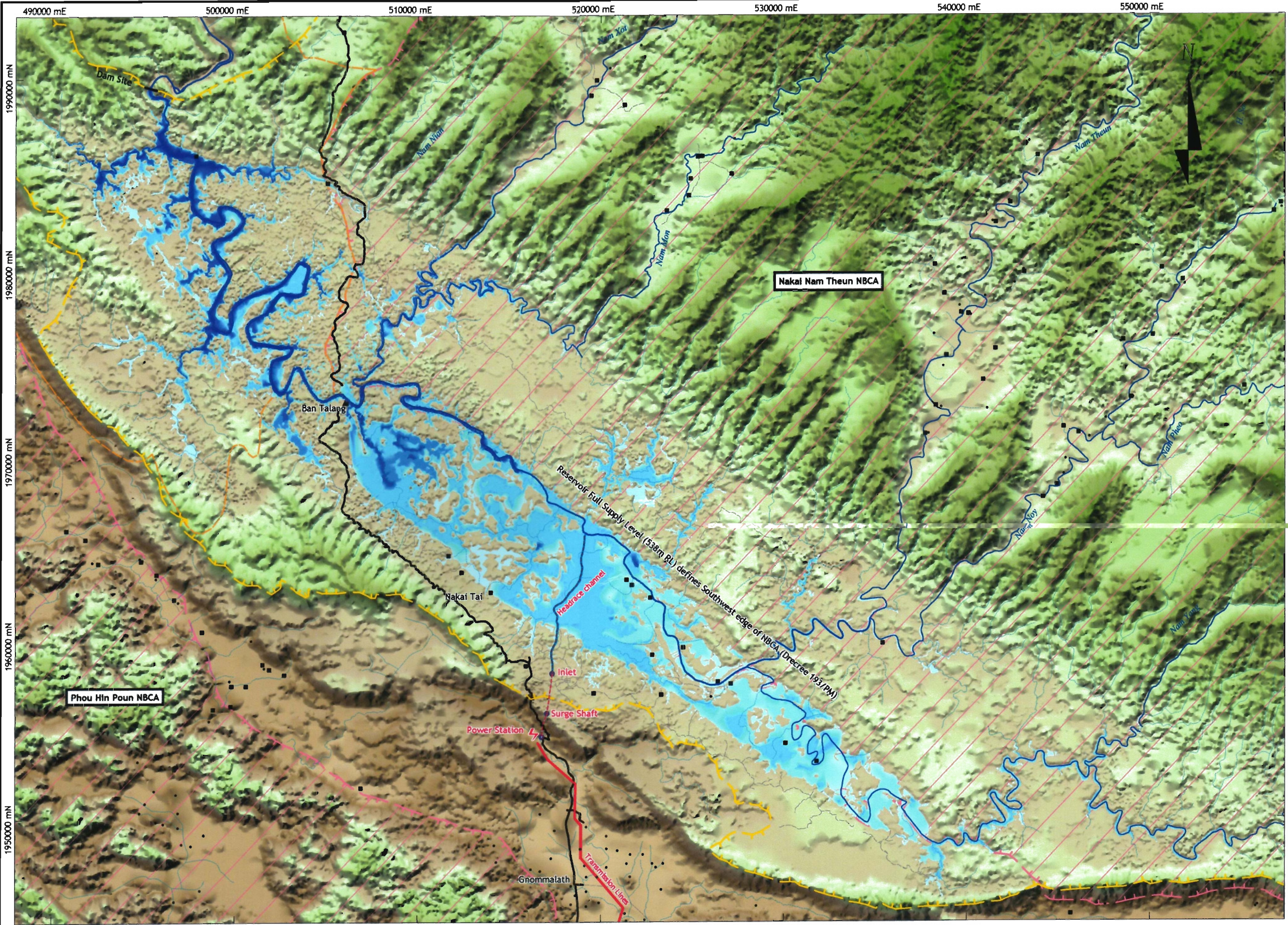
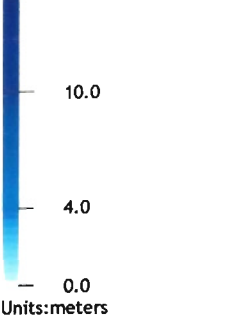
Elevation

(Above Mean Sea Level)



Reservoir Water Depth

Inundation 530m RL
15.9 (Est. Max Depth)



Water Depth model is an approximation only due to derivation from 5m contours (maximum detail currently available)

Map 15.3:

Nam Theun 2 WMPA Social & Environmental Management Framework		
Base Topographic Map Showing Reservoir Depth at Drawdown Level 530m RL		
Author : C. Flint	NT2_Administrative Boundaries 2002.wor	
Generated By: Terran GIS	April 2002	Scale: 1:200,000

Legend

Road Classification

- Local
- National
- Provincial

Drainage

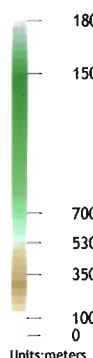
- Major River
- Minor River
- Stream

Boundaries (Approximate)

- NBCA Corridor
- ▨ NBCA
- Watershed
- Wetlands

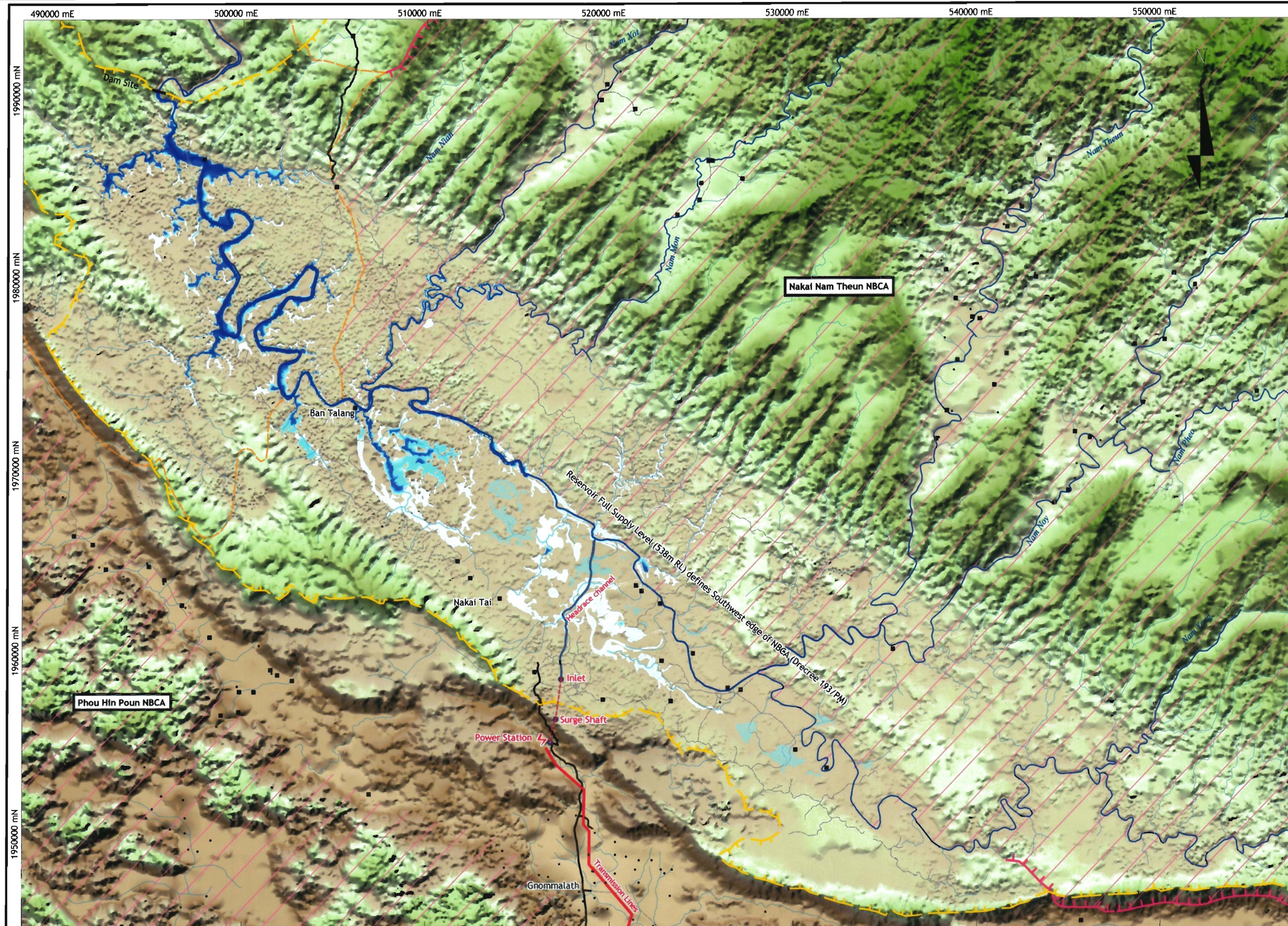
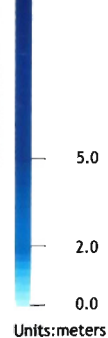
Elevation

(Above Mean Sea Level)



Reservoir Water Depth

Inundation 525m RL
11.0 (Est. Max Depth)



Water Depth model is an approximation only due to derivation from 5m contours (maximum detail currently available)

Map 15.4

Nam Theun 2 WMPA
Social & Environmental Management Framework

Base Topographic Map Showing Reservoir Depth
at Drawdown Level 525m RL

Author : C. Flint

Generated By: Terran GIS

April 2002

NT2_Administrative Boundaries 2002.wor

Scale: 1:200,000